



SANSIRI



IMAGINATION IS EVERYTHING  
LOCATION IS EVERYTHING

THE  
LINE  
PHAHONYOTHIN PARK



SANSIRI

**Sansiri 和 BTS 集團  
聯手開創**

泰國上市房地產開發商 Sansiri 和 BTS 集團攜手合作，  
開發具潛力的地點，為您提供舒適及便利的享樂生活。

Sansiri and BTS join hands in offering  
promising locations to bring you closer  
to a joyful life by connecting you with  
comfort and convenience.

# IMAGINATION IS EVERYTHING



**"IMAGINATION"** simply comes from desires in the hurried society with a wide variety of needs. This has evolved into the imagination with neither set form nor limit. Sometimes, it can come from whimsical impulses that reflect every inch of you

**Right here ... Every 'Imagination' is possible  
THE LINE Phahonyothin Park**

**「想像」** 意味著渴望，  
在這繁忙又快步調的社會，  
將浮現更多需求與期望，  
僅有想像沒有既定的形式與限制。

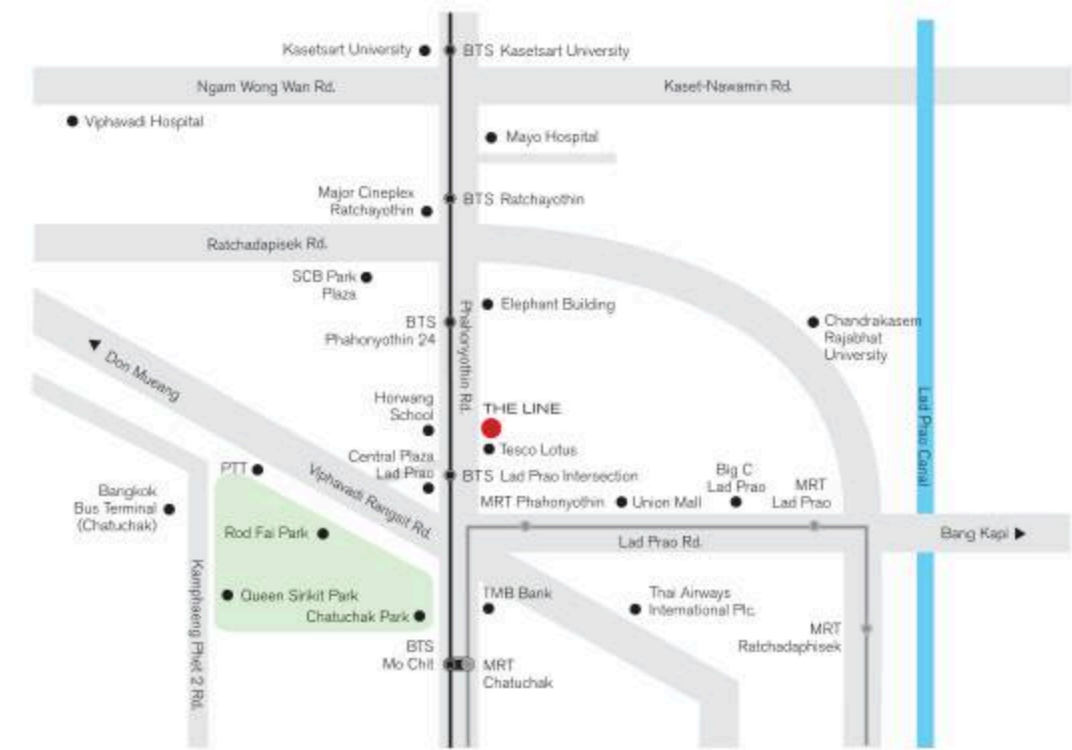
**THE LINE Phahonyothin Park  
實現您所有天馬行空的想法**



## IMAGINE...PRIME LOCATION

Every imagination is possible at "Lad Prao Intersection"  
 This location fulfills every transportation, work, living and lifestyle needs.  
 The centre for a variety of transportation choices:  
 Two commuter train lines and major expressways  
 Bangkok Bus Terminal and Don Mueang International Airport  
 The link to every conceivable destination

Several leading educational institutions and many lifestyle shopping malls are found here. Moreover, a large public park is serving as the cleansing lung of Bangkok. These are the charms and attractiveness of this location opening up to you with a new and exciting discovery everyday.



## 想像...居住於曼谷的絕佳地段

居住在Lad Prao十字路口，實現您所有想像。  
 此處為交通樞紐中心：  
 擁有雙捷運、主要交通幹線、長途巴士站且鄰近廊曼國際機場，  
 完善的交通建設、帶您輕鬆前往所有目的地。

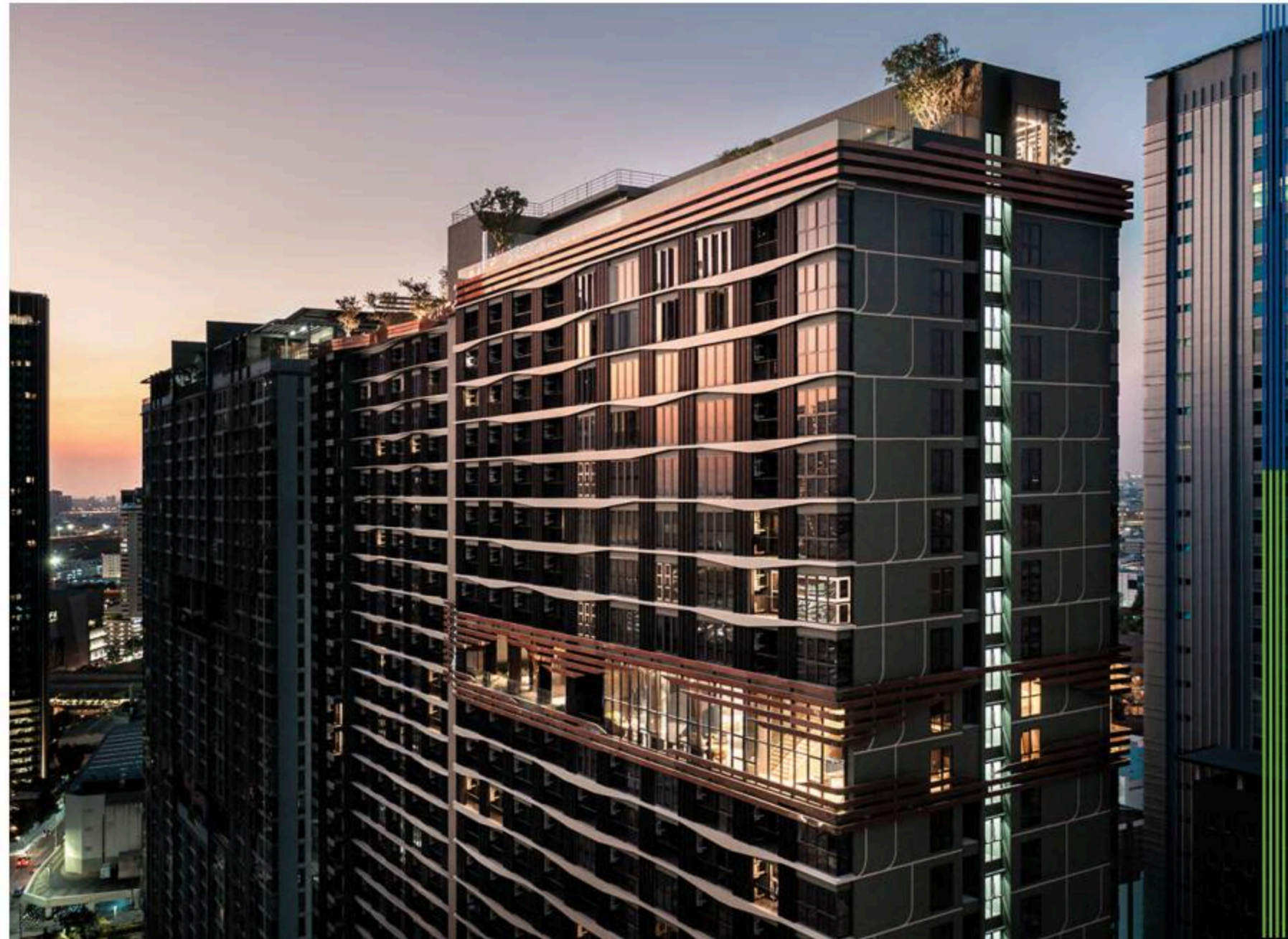
附近設有許多知名的教育機構、豐富多樣的購物商場、  
 大型的城市綠化公園、眾多企業職缺與優質生活體驗，  
 每天帶領您探索令人興奮的新生活，正是這裡的迷人之處。

## IMAGINE...LIVING WITH NATURE

THE LINE Phahonyothin Park utilizes 13,000 square metre of lush green garden within the project as the inspiration behind the design concept – to release every imagination into the power to create connecting the interior space to the exterior design in a different and interesting way through the “Magical Tree” approach with the building conceptualized as the framework of a tree with natural changing lights and shadow depending on the time of day – as if the building is a monumental and magical 32-storey tree standing on an expansive garden – allowing you to enjoy the verdant landscape and fresh air everyday of your life.

## 想像...居住於大自然之中

THE LINE Phahonyothin Park  
坐擁約13,000平方公尺的公園綠地，  
以綠蔭叢叢的花園作為靈感，  
讓想像空間轉換為力量實現理念，  
「Magical Tree」概念貫穿公寓內外，  
建築如一棵32樓高的大樹，聳立於寬闊綠意中，  
外觀隨光影變化而搖曳，  
讓您隨時享受蒼翠景觀與舒心微風。





## IMAGINE...YOUR OWN ENCHANTED FOREST

Experience your life so close to nature, because nature is our best neighbour. The project has been passionately designed where you can be immersed in nature every day of life enclosed by the large 13,000 square metres park. Being soothed from the chaotic life in the big city by communing with the simplicity of nature and oxygenating your life.

## 想像...專屬於您的魔法森林

視大自然為最好的鄰居，  
透過精心設計，  
彷彿每天置身於大自然的美妙之中。  
近13,000平方公尺的廣闊公園，  
帶您遠離城市的繁雜，  
為生活注入無限的新鮮活氣。



## CO-LIFESTYLE

FULFILL YOUR IMAGINATION AND ZEST FOR LIFE.

### THE NATURAL SANCTUARY

#### FEEL WELCOME IN NATURE'S EMBRACE

The trail shaped like a serpentine root of a gigantic tree directs you to the 'Natural Sanctuary' lobby where the vast and refreshing green park scenery greets you through the huge glass wall filled with tranquility, security, strength and solidity. You will get the feeling of being cocooned under the tree when the design has called for the selection of natural marble tiles arranged in random pattern, but symmetrical and captivating.

### 實現您對生活的想像與期待...

#### 在秘境中感受大自然的熱情擁抱

蜿蜒小徑就好比大樹藤蔓帶領您前往「秘境大廳」，耳目一新的廣闊綠景透過玻璃牆映入眼前，彷彿身處於樹洞之中，感受充滿寧靜、安全、活力十足而堅固的生活環境，隨性排列卻勻稱迷人的大理石磚，瀟灑輕鬆自然的氣息。



## CO-LIVING LOUNGE

### A MULTI-FACETED & RELAXING PARLOUR

All your leisure activities become loaded of fun and excitement, whether you have a party, watch a movie or play a game. Newly introduced "Desk Shuffleboard" gives you a novel experience of playing this pastime on a miniature scale. You can enjoy all these activities while admiring the view through full-height windows all around.

### 全方位的放鬆娛樂空間

無論想辦場派對、觀賞電影或是沉浸於遊戲中，  
都將充滿樂趣且令人興奮。  
新推出的“桌面沙狐球”遊戲，  
提供您不一樣的娛樂消遣，  
同時也能透過大片落地窗欣賞城市美景。

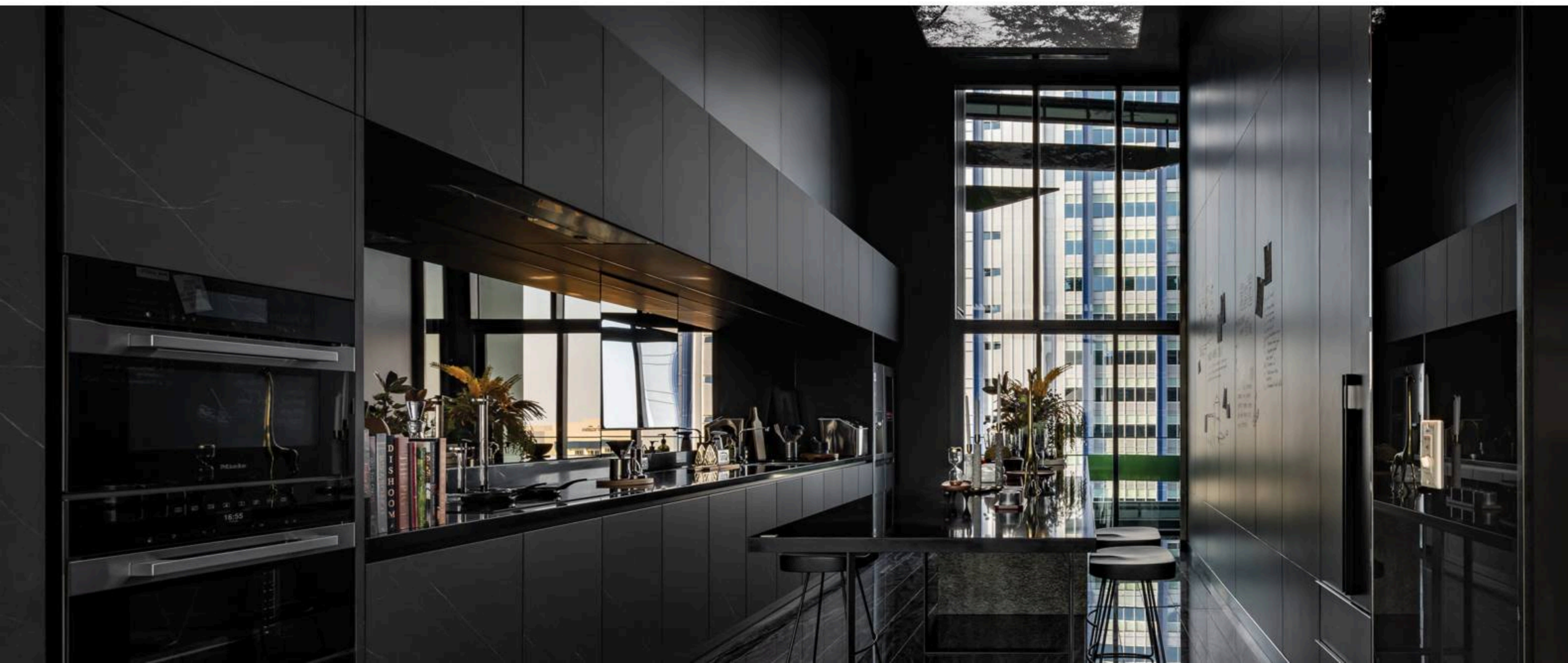
## CO-COOKING STUDIO

### IMAGINE...A FEAST IN THE FOREST

Enjoy a new cooking experience amidst nature as a reflection of the forest, with shimmering lights and shadows in the Co-cooking studio. Providing finest kitchen design through a special technique making of precious natural stone veneer along with an energy-saving **LG Instaview Door-in-Door refrigerator** and the **Smart Food Recycler** that turns food wastes into dried flakes suitable for mixing with soil, good for planting.

### 想像...在森林裡享用佳餚

共享廚房中搖曳的燈光和陰影，  
讓您體驗在大自然中烹飪的樂趣。  
廚房備有精細工藝的輕薄石板櫥櫃與先進的家電，  
如 **LG InstaView 節能冰箱** 和 **Smart Food Recycler 智能食物回收器**，  
可將剩餘食物轉化為適合與土壤混合的有機材料，為植物堆肥，  
在此能創造富有想像力的烹飪體驗。



## VISTA POINT

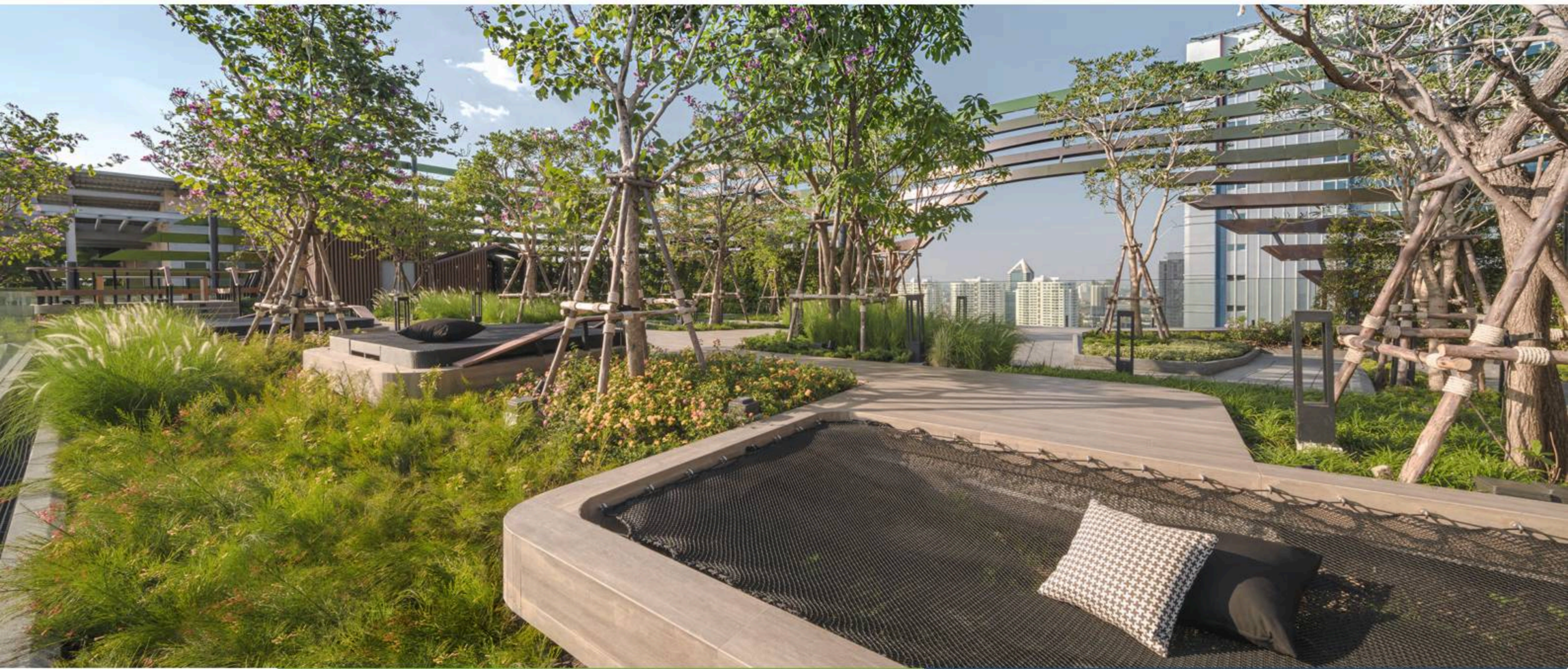
### IMAGINE ... THE VIEW BEYOND YOUR SIGHT

At the Vista Point, the sky is truly no limit when it comes to your imagination. This area is providing **Rabbit hole** and **Yellow Steps** as the outdoor playground for kids. You can be around when your kids enjoy all the fun and improve their skills.

### 想像...超越視野的極致美景

高空景觀花園擁有無際的天空，帶來無限的想像與希望。  
這裡，也是孩子們專屬的戶外遊戲場，  
設有**跳兔洞遊戲**和**爬梯遊戲**，  
除了能提升孩子們全方位的學習能力，  
也能看見他們快樂的神情。





## FLOATING NEST

### FEELING RELAXED AND LETTING YOUR FATIGUE MELT AWAY

The Floating Nest on the 32nd floor is designed to link nature and the view of the cityscape. Relaxing in the calm atmosphere and leaving the chaos of a busy city behind—seeing the sunset on the top with the fresh air while the solar charger is allowing you to keep your gadgets alive..

### 想像...所有的煩惱隨風而去

32 樓的飄浮鳥巢和城市景觀相連接，  
您能放鬆於平靜的氣氛，  
也可於此觀賞日落，  
遠離城市的繁忙與喧囂，  
讓陽光與清新的空氣為您補給能量。



## CO-WORKING SPACE

### A PLACE WHERE IMAGINATION AND CREATIVITY GO HAND-IN-HAND

The co-working space is purposely designed for all your conceivable needs with three zones, beginning with **the fully equipped Photo Studio** where you are free to create your masterpiece, followed by **the central Co-working Space** which you can work alone or in a group. The furniture is fully adaptive and moveable according to your preference. The special Aluminum Chains is used to partition the space for privacy but still feel its spaciousness. At last, it is where you can find **the Workshop area and Meeting room** especially designed to support every type of meetings.

### 想像力與創意並存的地方

共享工作空間，依照功能分為三個區域。

**攝影室** — 完善的設備，讓您自由地創造出攝影傑作。

**工作區** — 可以做為小組討論或獨自工作的空間，所有的家具皆能依照您的需求去做移動配置。

**會議室** — 採用特殊鋁鍊設計，讓住戶能在使用共享空間時，仍能保有私密性。這裡的設備齊全，讓您能夠順暢地進行各種會議。

## CO-PLAYING STUDIO

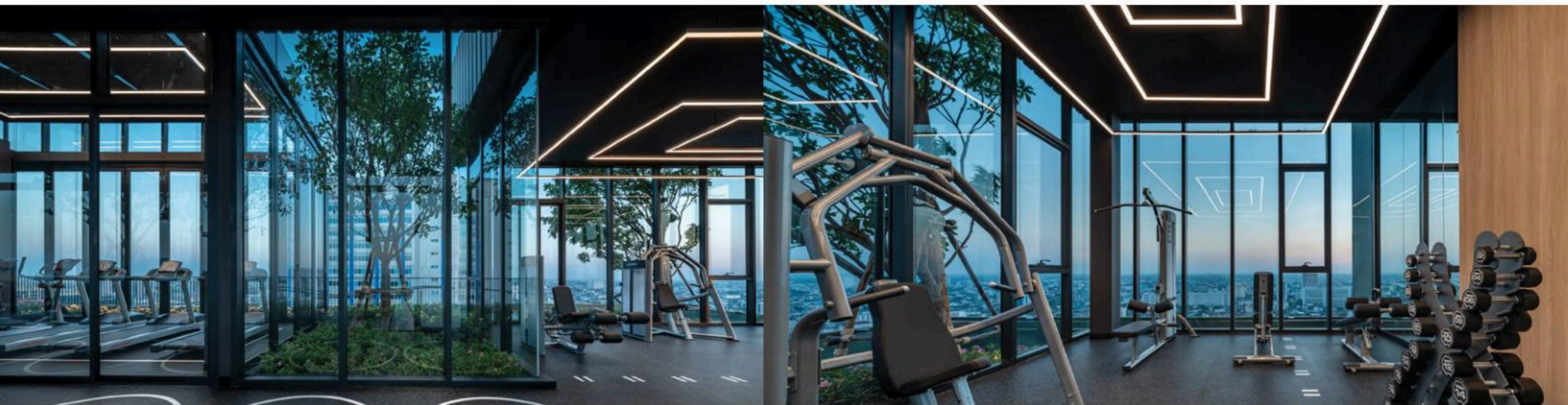
### LIGHTING UP YOUR IMAGINATION, SPARKING MORE FUN

Put the smile on the children's faces and create more fun activities as they can enjoy the world of bug's life adventures. A fancy-look slider, fun books and so many games are available to help children open up the world of imagination, and to support the learning progress that well consulted by Samitivej Hospital.

### 點燃想像力的愉悅火花

Samitivej醫院打造出兒童的天堂，點亮他們想像的火花，孩子能帶著微笑，創造出趣味十足的遊戲時光。享受探尋小蟲的冒險遊戲、玩溜滑梯、閱讀書籍等各種活動，幫助孩子們增添想像力、提升學習的動力，同時也加強他們全方位的發展。





## THE STARRY GYM

### STRENGTHENING YOUR BODY AND RELAXING UNDER THE STARS

Being full of energy and verve. Open up to the 180-degree view in a rooftop gym divided into three zones and equipped with wide array of exercise machines. **The Smart Technology Equipment Zone** contains many innovative equipment such as Reax Board, Reax Light, Fluiball and Smart Mirror. **The Exercise Machine Zone** features treadmills and interactive bicycles with personal screens providing you with realistic situations and adjusting the bicycle due to the selected route, suites for your workout pleasure. Also, **The Weight Training Zone** is outfitted with a full range of top-quality weights.

### 想像...在星空下鍛鍊身體、放鬆身心

活力充沛的180度美景高空健身房，根據功能的不同分成三個區域。

- 智能器材區** — 有著各種新穎的設備，像是Reax Board（反應訓練健身機）、Reax Light（靈敏訓練機）、Fluiball（螢光健身球）和Smart Mirror（智能鏡）。
- 有氧訓練區** — 跑步機與健身腳踏車皆配有專屬螢幕，提供多樣虛擬情境模式，增添運動樂趣。
- 多功能重訓區** — 配有完善重訓設備，提供高品質的體驗。



## TWINKLE SKY POOL

### RUNNING WILD TOWARDS THE HORIZON AND THE WAVES

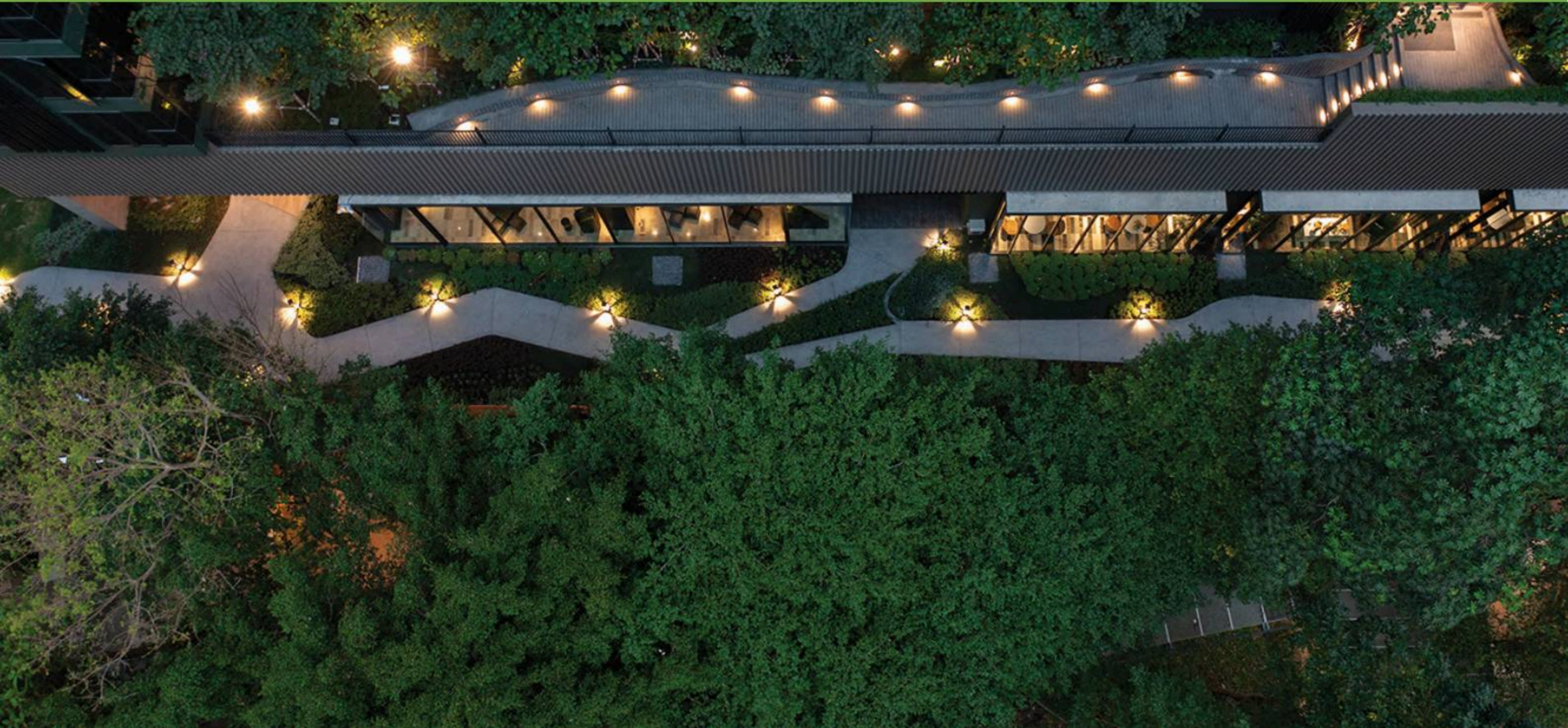
Designed in cascades to add a gratifying experience as you swim beneath the stars or sit back and relax in a conducive atmosphere surrounded by panoramic view towards the horizon. Jacuzzi and kid's pool are perfectly incorporated into the design.

### 想像...奔向地平線與微微波浪

泳池的噴泉設計，舒緩您疲勞的身心，同時也能滿足在閃爍星空下游泳的愉悅體驗，或是選擇倚躺於流線型座椅，欣賞延伸至地平線的繁華美景。另設有按摩泳池與兒童泳池，所有設備皆完美地融入設計之中，給您最優質的休閒時光。

Not only do we design aesthetic and functional products,  
we also incorporate green practices to  
promote the sustainability of our environment.

尚思瑞的住宅不僅具功能性且富有生活美學，  
同時也結合綠色環保設計，  
以維護環境達到永續發展。





## INDEX

### FACILITIES (COMMON AREA)

#### GREEN INNOVATION

- LED MOTION SENSOR**  
Allowing lights to turn on automatically when movement is detected.
- SOLAR CHARGER**  
Recharging your devices from solar power
- THE EARTH BLOX**  
The recycling of lightweight concrete block that left over at site
- REFUN MACHINE**  
To get benefits from returning used PET bottle
- INSTAVIEW REFRIGERATOR**  
Refrigerators that allows you to see inside without letting the cold air out.
- SOLAR CELL ROOFTOP**  
Photovoltaic system, converts the energy of light into electricity, recoups generally used energy at site
- EV CHARGER**  
Electric recharging point for electric vehicle
- WATER SAVING SANITARY WARE**  
To economize water consumption
- SMART FOOD RECYCLER**  
The food waste disposal machine

#### GREEN MATERIAL

- MIXED MARBLE TILES**  
Utilized marble waste from manufacturing to reduce the amount of mining and processing natural materials.
- COMPOSITE WOOD**  
Environmental friendly materials by mixing quality wood powder with PE plastic, more durable with low maintenance
- TERRAZZO**  
A composite material consists of chips of marble, granite, etc.
- TURF CELL**  
Porous Paving Material that allows plants to grow and absorbs rainwater into underground
- STONE VENEER CABINET**  
Using less of natural stone by cut to consistent thickness and weight for veneer
- RECYCLED TIRE FLOORING**  
Re-using car tires which are durable, resilient and resistant with the highest safety standard to satisfy your needs

### RESIDENTIAL UNIT

- ECO-FRIENDLY PAINTING**  
Nontoxic paints with low VOC that good for health and environment
- DOUBLE SKIN**  
Turning balcony to indoor/outdoor space and decrease in-room temperature
- HARD COAT LOW-E GLASS**  
Reducing the amount of ultraviolet and infrared light in units
- FIN FACADE**  
To create shade and shadow above balconies

### ECO-PLANTING

- RAIN GARDEN**  
To collect and store some rainwater into underground
- POLLUTION ABSORPTION PLANT**  
Natural air-purifying system, using plants to absorb air pollution
- VERTICAL GARDEN**  
Increasing green area to absorb more pollutants
- COVERAGE PLANTING**  
To increase oxygen production



## PROJECT INFORMATION

**Location** : Phahonyothin Road, Chom Phon Sub-District, Chatuchak District, Bangkok  
**Land Area** : Approximately 2 Rai (0.8 Acre)  
**Project Type** : 1 Residential building 32 stories,  
1 Parking building 16 stories (excluding basement)  
is Co-common property of 3 condominium  
**Total Unit** : 881 Units  
**Residential Unit** : 880 Units  
**Commercial Unit** : 1 Unit

Unit Type	Unit Area (sq.m)	Unit Area (sq.ft)
1 Bedroom 1 Bathroom	31.75 - 41.25	342 - 444
2 Bedrooms 2 Bathrooms	58.75 - 66.75	632 - 718
2 Bedrooms 2 Bathrooms (Duplex)	79.50 - 82.25	856 - 885

## 項目訊息

**地理位置** : Phahonyothin Road, Chom Phon Sub-District, Chatuchak District, Bangkok  
**基地面積** : 約 2 萊 (3,200 平方公尺)  
**項目類型** : 一棟住宅大樓32樓、一樓停車場 16樓  
(及地下2層停車空間)  
**總戶數** : 881 戶  
**住宅** : 880 戶  
**店面** : 1 戶

房型	面積(平方公尺)	面積(坪)
1房1衛	31.75 - 41.25	9.60 - 12.47
2房2衛	58.75 - 66.75	17.77 - 20.19
2房2衛 (樓中樓)	79.50 - 82.25	24.04 - 24.88

## OTHER FACILITIES

- Lobby Lounge
- Garden
- Co-Working Space
  - Photo Studio
  - Workshop Room
  - Meeting Room
- Co-Living Space
- Co- Cooking Studio
- Co-Playing Space for Kid
- Swimming pool with Jacuzzi
- Kid's Pool
- Exercise Room with Equipment
- Rooftop Garden and Playground

## COMMON SPACE

- Public WiFi
- Electric Car Charging Station
- Carpark

## Others:

- 24-hour security by Guard Service
- 24-hour CCTV
- Parking spaces

Remark : The condition is subject to change without prior notice.

## 公共設施:

- 禮賓大廳
- 1樓, 2樓, 22樓景觀花園
- 公共工作空間
  - 攝影室
  - 創意工作坊
  - 會議室
- 共享休憩空間
- 共享廚房
- 共享遊戲空間
- 游泳池與按摩池
- 兒童泳池
- 多功能健身房
- 露天花園與戶外兒童遊戲室
- 自助洗衣房

## 項目共享空間:

- 在共享設施空間內提供無線網絡
- 電動汽車充電樁
- 訪客停車位

## 其他:

- 24 小時警衛保全
- 24 小時錄影監控 (CCTV)
- 停車場

備註: 如有更改, 恕不另行通知



**3 棟大樓之共用區域**

1. 12,800平方公尺綠地公園
2. 停車樓 (地上16層,地下2層)
3. 社區內之共同通行道路
4. 商業及辦公大樓(複合使用大樓)
5. 花園及通往商業及辦公大樓之通行道路
6. 社區出入口道路轉彎處

**Co - common property of 3 condominiums**

1. Park and garden
2. 16 floors parking building (and 2 floors underground parking garage)
3. internal road
4. Commercial and office building (multi-purpose building)
5. Garden and walkway of commercial and office building
6. Turning point of entrance exit way

**MASTER AND FACILITIES PLAN**





1<sup>st</sup> Floor Plan 



3<sup>rd</sup>-12<sup>th</sup>, 14<sup>th</sup>, 15<sup>th</sup>, 17<sup>th</sup>, 18<sup>th</sup>, 20<sup>th</sup> Floor Plan 



2<sup>nd</sup> Floor Plan 



13<sup>rd</sup>-16<sup>th</sup>, 19<sup>th</sup>, 21<sup>st</sup> Floor Plan 



22<sup>nd</sup> Floor Plan



24<sup>th</sup> Floor Plan



23<sup>rd</sup> Floor Plan



25<sup>th</sup> Floor Plan



28<sup>th</sup> Floor Plan



26<sup>th</sup>, 30<sup>th</sup> Floor Plan



29<sup>th</sup> Floor Plan



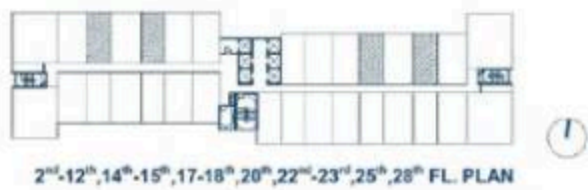
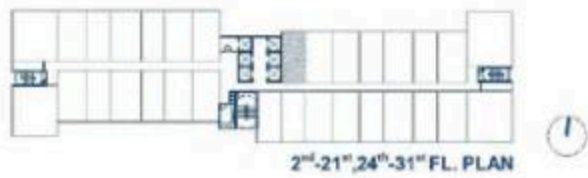
27<sup>th</sup>, 31<sup>st</sup> Floor Plan



32<sup>nd</sup> Floor Plan 



1A  
31.75 - 32.75 SQ.M.



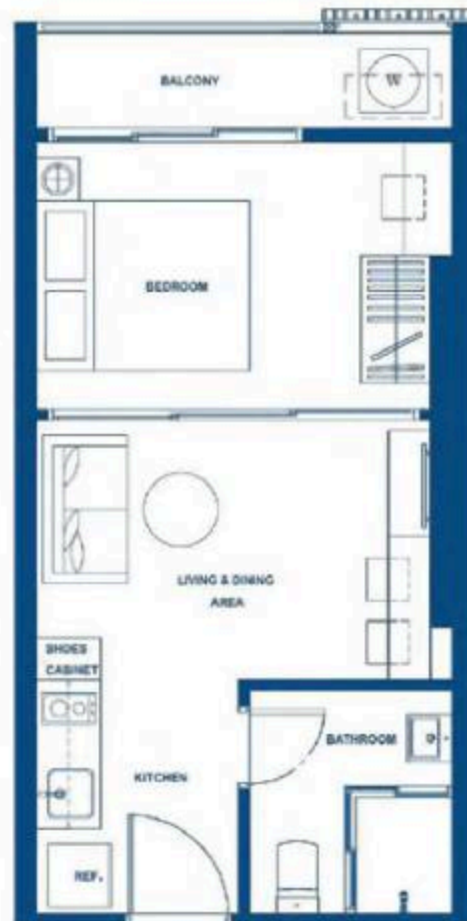
Remark : Layout and area of the properties which identified herein may be changed as deemed appropriate, but will not impact upon the use



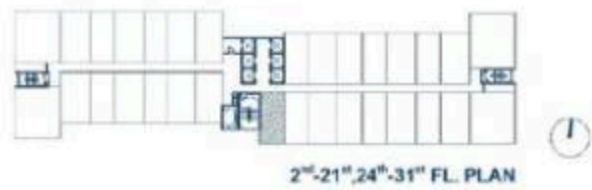
1A-1  
32.50 - 32.75 SQ.M.



備註：在此圖面或其他銷售文件標示之公共設施格局尺寸，依實際情況可能略有變更，但不影響整體使用功能。



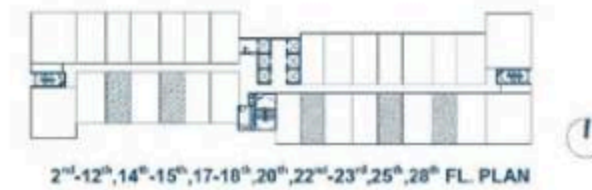
1A-2  
32.75 - 33.50 SQ.M.



2<sup>nd</sup>-21<sup>st</sup>, 24<sup>th</sup>-31<sup>st</sup> FL. PLAN



1AM  
32.50-32.75 SQ.M.



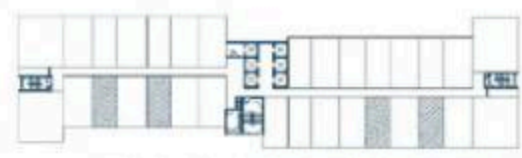
2<sup>nd</sup>-12<sup>th</sup>, 14<sup>th</sup>-15<sup>th</sup>, 17-18<sup>th</sup>, 20<sup>th</sup>, 22<sup>nd</sup>-23<sup>rd</sup>, 25<sup>th</sup>, 28<sup>th</sup> FL. PLAN

Remark : Layout and area of the properties which identified herein may be changed as deemed appropriate, but will not impact upon the use

備註：在此圖面或其他銷售文件標示之公共設施格局尺寸，依實際情況可能略有變更，但不影響整體使用功能。



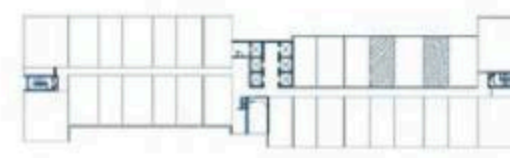
**1A-M-1**  
32.50 - 32.75 SQ.M.



13<sup>th</sup>, 16<sup>th</sup>, 19<sup>th</sup>, 21<sup>st</sup>, 24<sup>th</sup>, 26<sup>th</sup>-27<sup>th</sup>, 29<sup>th</sup>-30<sup>th</sup> FL. PLAN



**1B**  
32.50 - 32.75 SQ.M.



24<sup>th</sup>-31<sup>st</sup> FL. PLAN

Remark : Layout and area of the properties which identified herein may be changed as deemed appropriate, but will not impact upon the use

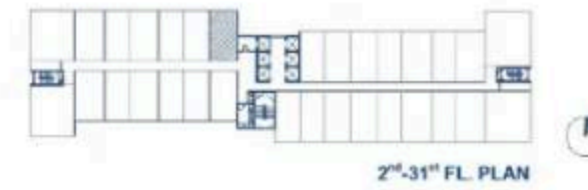
備註：在此圖面或其他銷售文件標示之公共設施格局尺寸，依實際情況可能略有變更，但不影響整體使用功能。



**1BM**  
32.50 - 32.75 SQ.M.



**1C**  
36.75 - 37.50 SQ.M.

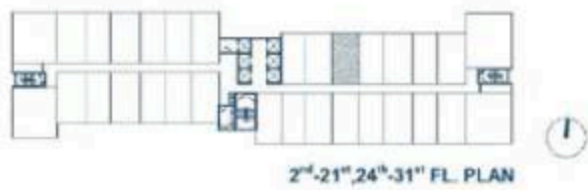


Remark : Layout and area of the properties which identified herein may be changed as deemed appropriate, but will not impact upon the use

備註：在此圖面或其他銷售文件標示之公共設施格局尺寸，依實際情況可能略有變更，但不影響整體使用功能。



**1C-1**  
36.50 - 36.75 SQ.M.



2<sup>nd</sup>-21<sup>st</sup>, 24<sup>th</sup>-31<sup>st</sup> FL. PLAN



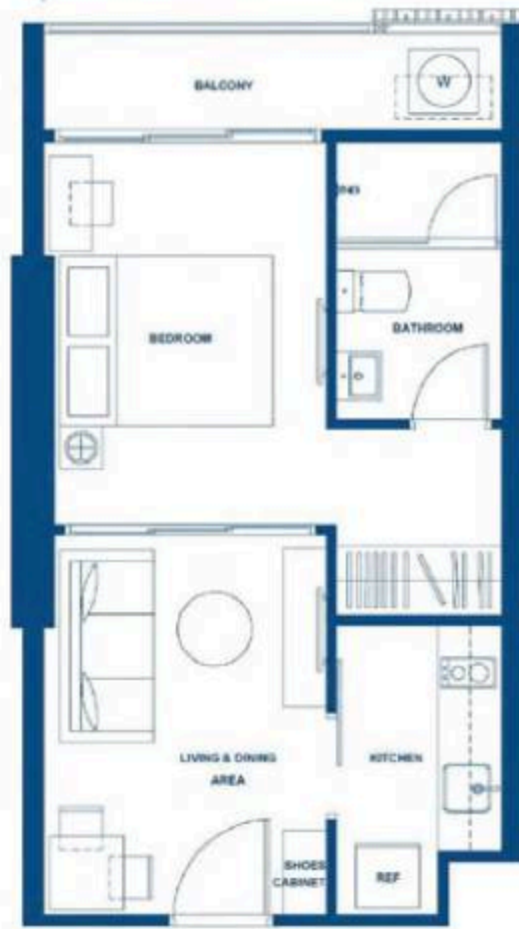
**1C-2**  
36.75 - 37.00 SQ.M.



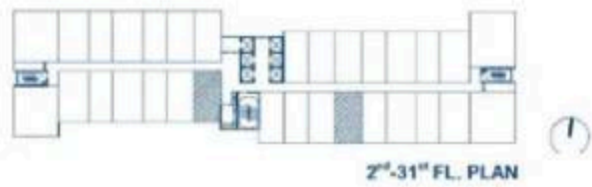
2<sup>nd</sup>-31<sup>st</sup> FL. PLAN

Remark : Layout and area of the properties which identified herein may be changed as deemed appropriate, but will not impact upon the use

備註：在此圖面或其他銷售文件標示之公共設施格局尺寸，依實際情況可能略有變更，但不影響整體使用功能。



**1CM-1**  
36.50 - 37.75 SQ.M.



**1CM-2**  
36.75 - 37.00 SQ.M.

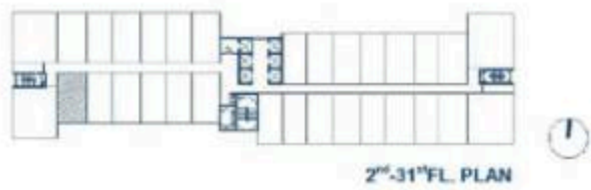


Remark : Layout and area of the properties which identified herein may be changed as deemed appropriate, but will not impact upon the use

備註：在此圖面或其他銷售文件標示之公共設施格局尺寸，依實際情況可能略有變更，但不影響整體使用功能。



**1D**  
39.75 SQ.M.

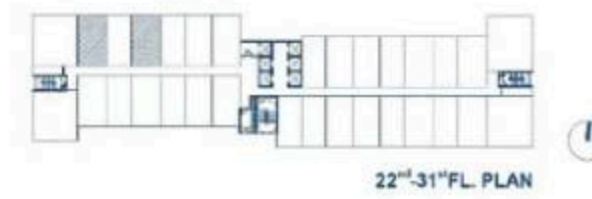


2<sup>nd</sup>-31<sup>st</sup> FL. PLAN

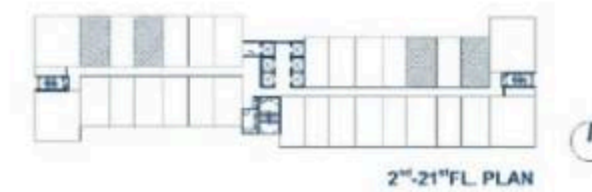
Remark : Layout and area of the properties which identified herein may be changed as deemed appropriate, but will not impact upon the use



**1D-1**  
40.00 - 41.25 SQ.M.



22<sup>nd</sup>-31<sup>st</sup> FL. PLAN

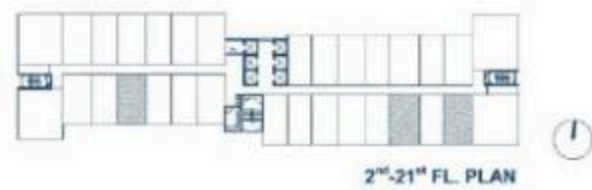
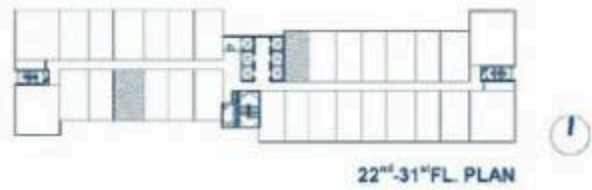


2<sup>nd</sup>-21<sup>st</sup> FL. PLAN

備註：在此圖面或其他銷售文件標示之公共設施格局尺寸，依實際情況可能略有變更，但不影響整體使用功能。



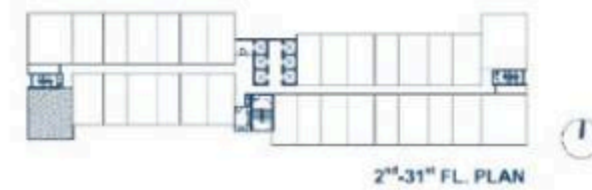
**1DM-1**  
40.75 - 41.25 SQ.M.



Remark : Layout and area of the properties which identified herein may be changed as deemed appropriate, but will not impact upon the use



**2A**  
58.75 - 60.75 SQ.M.

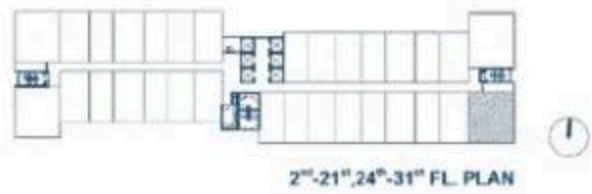


備註：在此圖面或其他銷售文件標示之公共設施格局尺寸，依實際情況可能略有變更，但不影響整體使用功能。



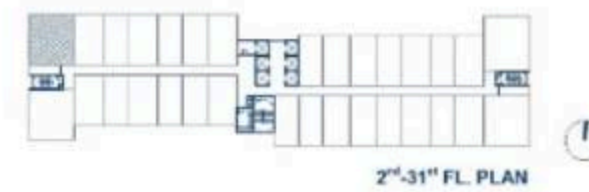
2A-1

59.00 - 60.00 SQ.M.



2A-2

58.25 - 60.25 SQ.M.



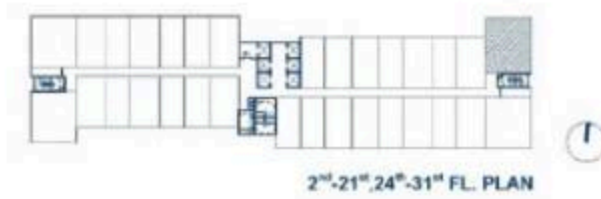
Remark : Layout and area of the properties which identified herein may be changed as deemed appropriate, but will not impact upon the use

備註：在此圖面或其他銷售文件標示之公共設施格局尺寸，依實際情況可能略有變更，但不影響整體使用功能。



2B

64.75 - 66.75 SQ.M.

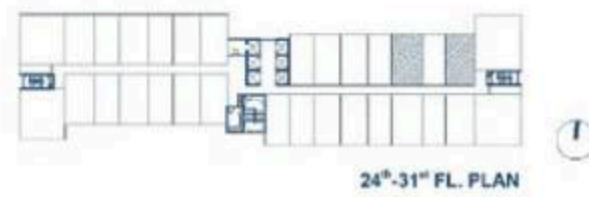


Remark : Layout and area of the properties which identified herein may be changed as deemed appropriate, but will not impact upon the use

備註：在此圖面或其他銷售文件標示之公共設施格局尺寸，依實際情況可能略有變更，但不影響整體使用功能。



2C  
81.50 - 82.25 SQ.M.

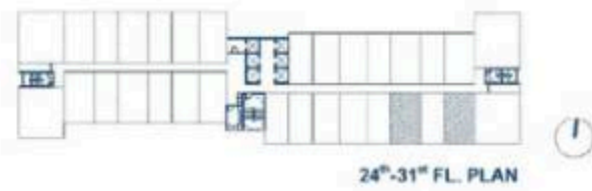


Remark : Layout and area of the properties which identified herein may be changed as deemed appropriate, but will not impact upon the use

備註：在此圖面或其他銷售文件標示之公共設施格局尺寸，依實際情況可能略有變更，但不影響整體使用功能。



**2CM**  
81.50 - 82.25 SQ.M.



Remark : Layout and area of the properties which identified herein may be changed as deemed appropriate, but will not impact upon the use

備註：在此圖面或其他銷售文件標示之公共設施格局尺寸，依實際情況可能略有變更，但不影響整體使用功能。



SANSIRI.COM

Phahonyothin

THE  
LINE  
PHAHONYOTHIN PARK

Project Owner : NUVO LINE AGENCY CO.,LTD Company's registered no. 0125550046236. Head office : 59 Soi Rim Khlong Phra Khanong, Phra Khanong Nuea Sub-District, Vadhana District, Bangkok 10110. Registered capital(THB) : 100,000,000.00, Paid up capital(THB) : 100,000,000.00 (as of date 10 Jan 2022). The President : Mr. Uthai Uthaisangsuk. The Project : THE LINE Phahonyothin Park Building B, Condominium's registered no. 11/2564, Land title deed no. 456, approximately area 2 Rai, located at Phahonyothin Road, Lat Yao, Chatuchak, Bangkok , as a Condominium of 32 storey(ies), 1 building(s), total of 881 unit(s), (for residential: 880 units, and for commercial: 1 units).The Land and building have been mortgaged with Bangkok Bank PLC., EIA approved under the approval letter no. 1009.5/14646, dated 6 February 2018. Ready to transfer ownership within 30 days upon the purchaser pays the unit price in full together with the sinking fund, common fee, tax and other fees as prescribed by Project Owner or the Condominium Juristic Person subjected to the Condominium law.