



LUXURY IS SPACE

THE
MONUMENT
THONG LO

THE MONUMENT
THONG LO

THE MONUMENT TO GENERATIONS

A testament to the establishment of a family's wealth and prestige manifests in a residential development of monumental significance. Preserve the prosperity of your family through a birth right lasting for generations to come, elegantly crafted in a building defined by the rarest elements and resonating with a distinction that will carry on through the ages.



Photography on location with simulated atmosphere and surroundings.



Photography on location with simulated address here and surroundings.

THE STATEMENT ADDRESS

Home to some of the most well-heeled residents and more than Bangkok's hippest street, Thong Lo is the affluent neighbourhood attracting the city's cognoscenti, captivated by the area's flourishing array of sophisticated dining establishments, cafés, bars and burgeoning boutiques. With a host of the most sought after amenities including prestigious schools and nurseries, leading healthcare facilities and your closest friends at your doorstep, Thong Lo is destined to remain one of the most coveted addresses for a long time to come.

THONG LO AND GENERATIONS

Where else in Bangkok can every generation in your family appreciate the finer things in life? With so much that Thong Lo has to offer, every day will be filled with plentiful choices from the essentials you will always need to the unique activities that make life worth living. Appreciate the joys of spending quality time with the family so close at hand.



THONG LO MAP

In the heart of Bangkok's dining and entertainment district, everything you could want is nearby. Moments from The EM District, numerous luxury lifestyle shopping complexes and other useful places, nothing is far away being located near Thong Lo BTS station. With a multitude of small streets acting as handy shortcuts to other areas, further destinations can be easily reached from the nearby expressway.





Photography on location with simulated atmosphere and surroundings.

THE MONUMENT THONG LO LUXURY IS SPACE

Appreciate room to enjoy life to the fullest in a rare development that is big on space. From residential unit sizes unlike any other being built, to majestic trees that have stood in the grounds for over a century, the larger than life proportions magnify the luxury of living in an age when every square inch increases your gratitude for everything life has to offer.



Photography on location with simulated atmosphere and surroundings.



Photography on location with simulated atmosphere and surroundings

THE MONUMENT THONG LO ARCHITECTURE

A landmark residence rises to prominence in a towering monolith of approximately 177 metres in height, with a state of the art building flawlessly designed by world renowned architecture firm Quinrix. The 45-floor building radiant in its purity, cloaked in light and sound protecting triple glazed low-emissivity insulating glass, has been painstakingly crafted utilising a selection of only the finest materials from around the world and warm, rich woods to create what will be the most prestigious address in the ultimate lifestyle hub of Thong Lo.



Photography on location with simulated atmosphere and surroundings.



Photography on location with simulated atmosphere and surroundings.



Photography on location with simulated atmosphere and surroundings.

SWIMMING POOL

The 2nd floor swimming pool at the front of the project is a striking, iconic feature, shaped from aluminium cladding, showcasing the property's new dimension in architectural design. Plunge into a free flowing sculptural masterpiece of approximately 28 metres in length and imagine you are floating through the sky amidst a pool constructed from white cloud marble, whilst your loved ones recline under the shade afforded by an awning completed utilizing solid wood. The entire facility is perfectly ensconced in a multi-level architectural form that merges with the surrounding landscape of nature to exquisitely envelop you in a unique experience of rejuvenation.

GREEN SPACE

The spirit of the project draws inspiration from the lush, verdant spaces surrounding the building with separate front and rear gardens just like a home. With one measuring approximately 320 square metres and the other 600 square metres, nature is truly interwoven into the design to create a harmony that transcends the experience beyond mere living. Underscored by the soaring luxury of five ancient trees that have stood the test of time over the lifetime of Thong Lo, life continues to flourish beneath their shade in an expansive leafy oasis unique to the centre of the city.





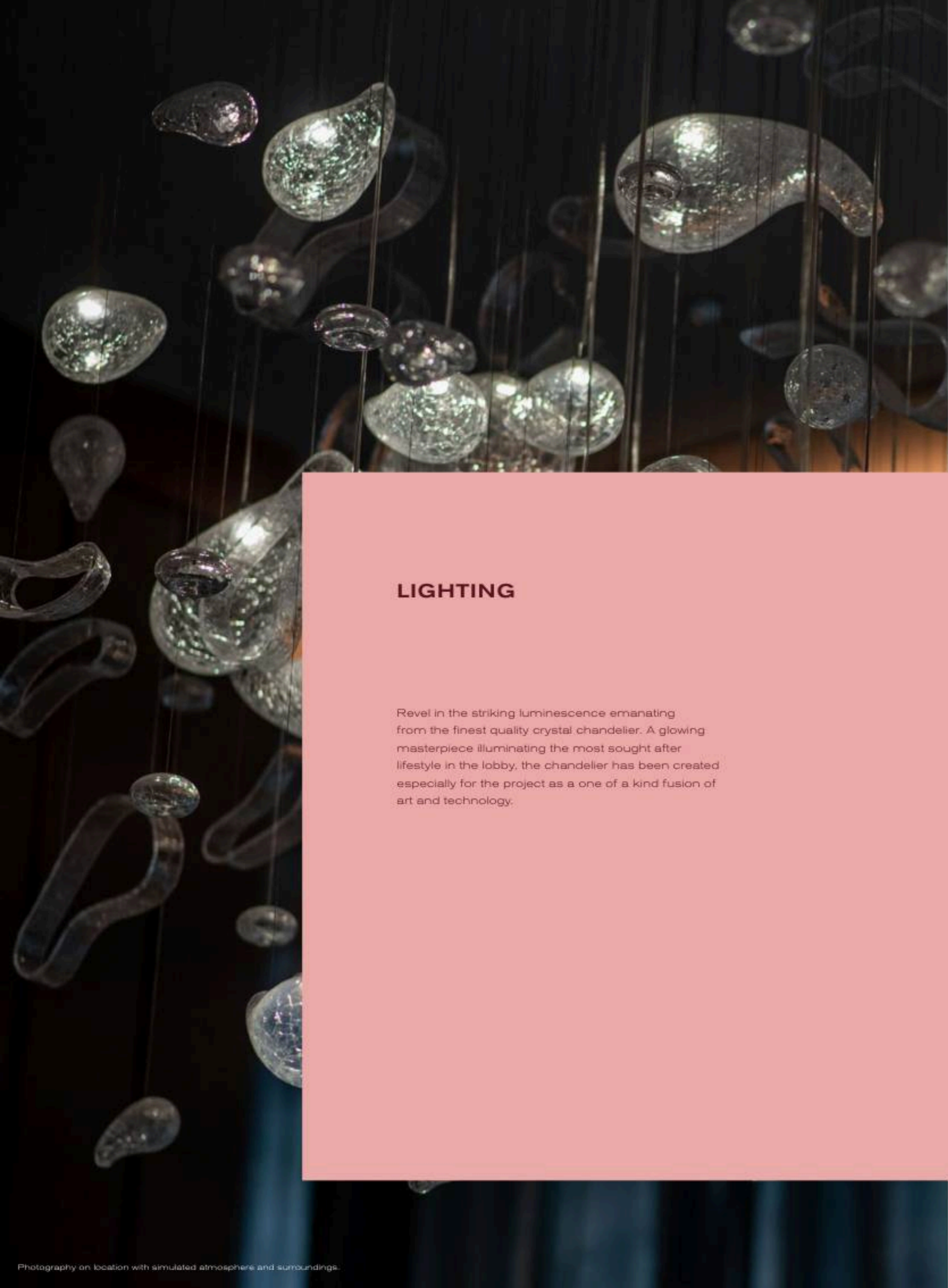
GARDEN SPACE

The capacious park sized garden affords an open green space measuring approximately 1,000 square metres in area yet creates a sensation of utmost privacy, as if you are relaxing in the back garden of a family home. Replete with multipurpose areas where innumerable activities may be enjoyed, the space can be adapted in many different ways depending on the time of day such as meeting up with friends or quietly reading a book and having a cup of coffee. Being suitable for activities such as jogging, yoga, children playing and hosting events, the garden is a centre for the development that makes every day pass by with endless joy for residents of every generation.



LOBBY

Experience the comforts of home from the very first step through the elegant entrance to the luxurious lobby, paved with solid wood flooring and clad in the finest marble. Every touch point has been selected to evoke a feeling of the unique, with pillars dressed in handpicked, premium leather cow-hide, and furnished with the finest furniture made with exceptional materials such as interlaced leather and petrified wood. Although grand and spacious, the lobby has been cleverly designed to still remain a delightful and cosy sanctuary from the bustling world outside.



LIGHTING

Revel in the striking luminescence emanating from the finest quality crystal chandelier. A glowing masterpiece illuminating the most sought after lifestyle in the lobby, the chandelier has been created especially for the project as a one of a kind fusion of art and technology.





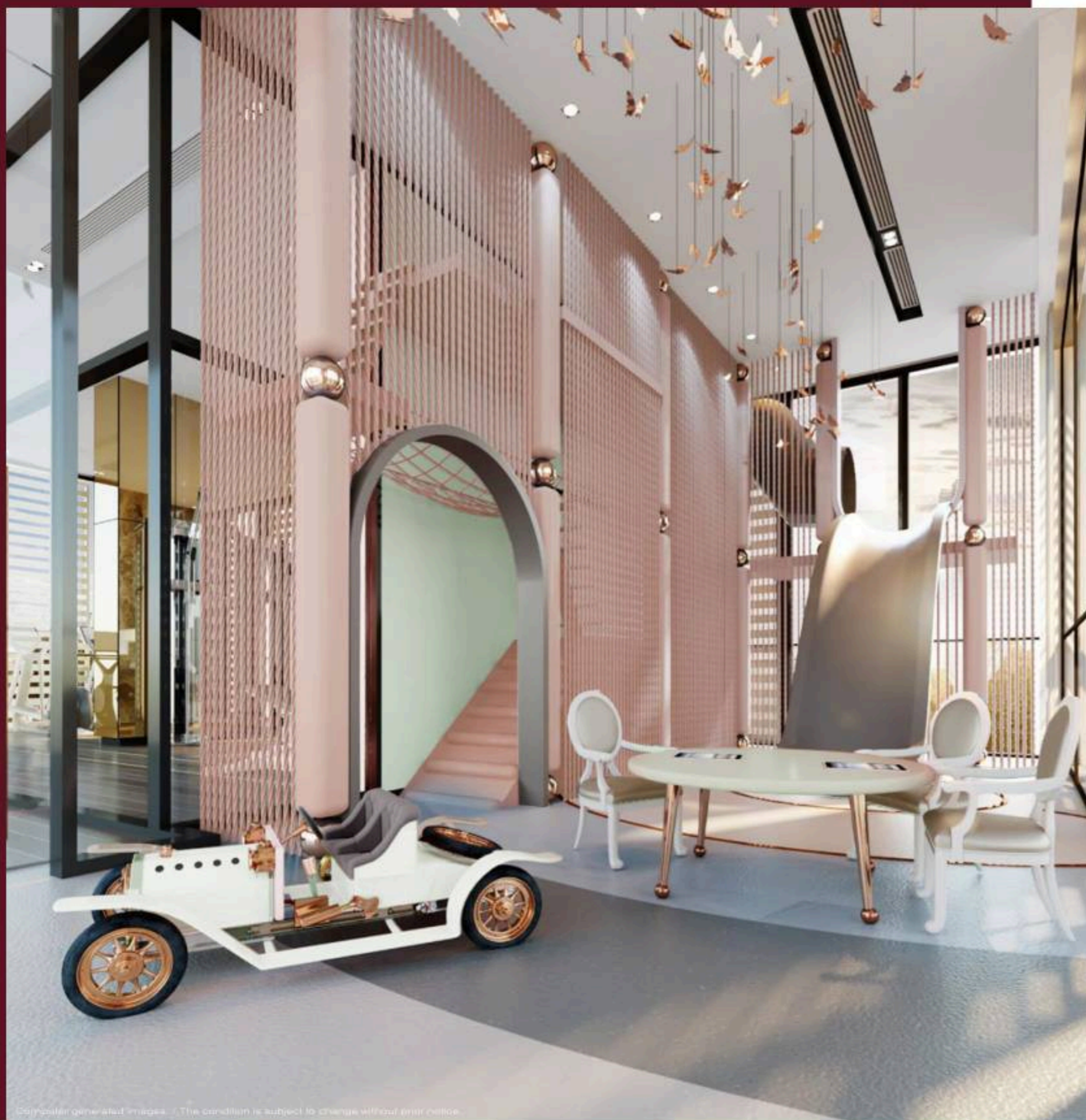
MARBLE

Nowhere else will you feel enfolded in so much luxury, with life accentuated in the rarest marbles especially selected for the project based on their beauty and distinctive pattern. Many of the marbles may be found in abundance exclusively here, giving you the feeling of being surrounded by elements that are hard to find and available to only the select few.

MAILROOM

Receiving a letter will never be the same again when your post arrives in the most unique mailroom of any condominium. Evocative of the drawers of cabinets you may remember from childhood, each post box feels like a piece of antique wooden furniture brought up to date with technology of the present. Each cabinet is fashioned in wood and detailed with premium leather, set alongside brass handles in a unique shape and pattern that are amusing to use.





CHILDREN'S PLAYROOM

Let your child explore their imagination in a whimsical wonderland, with accents of pastel colours and playful vintage furnishings. The 5-metre high ceilings create an open luxury playscape for the young ones to have fun. Enjoy your workout with a peace of mind in the adjacent active areas such as the Fitness and Yoga Room, whilst your children enjoy their playtime nearby.



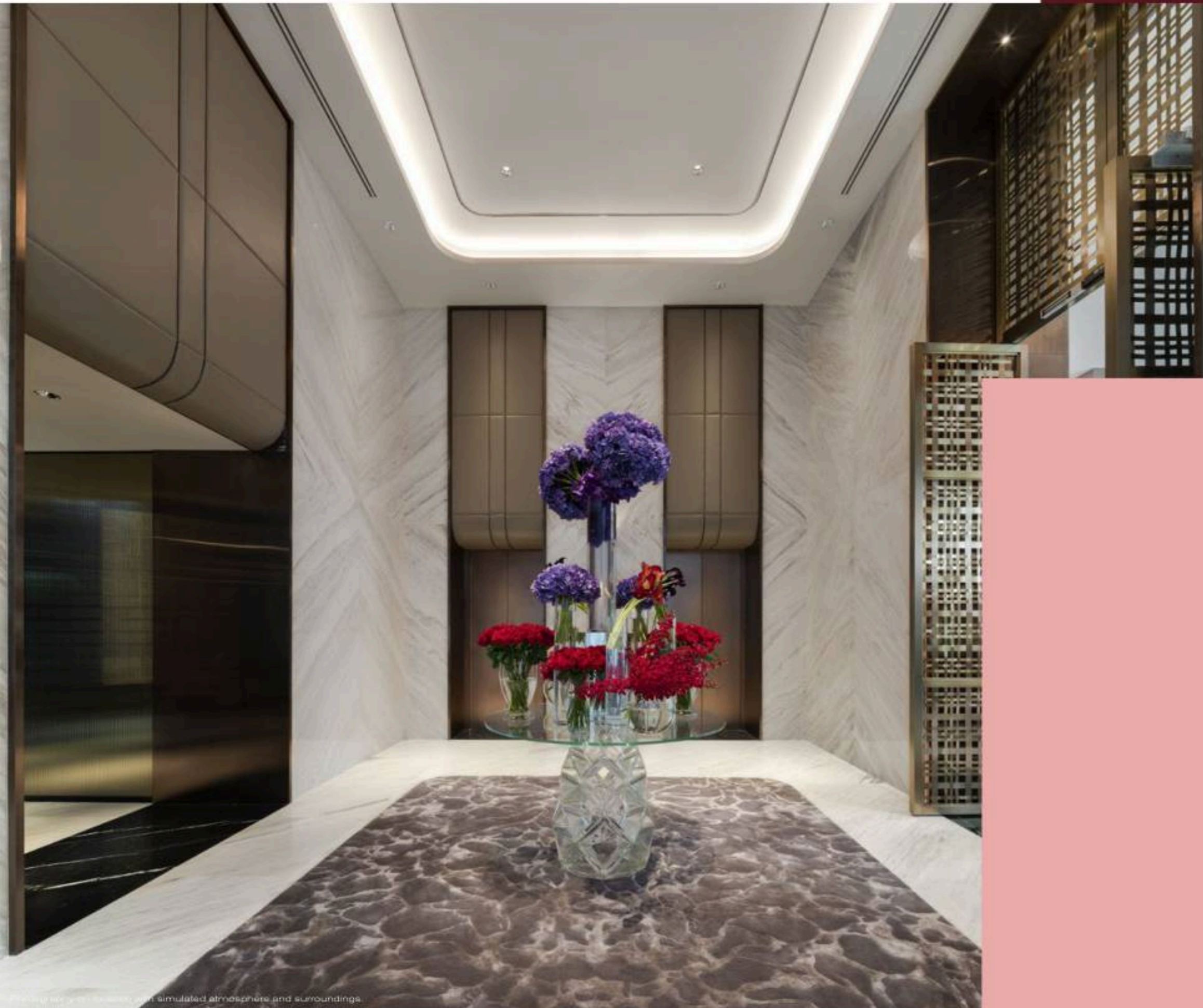
FITNESS STUDIO

Boasting lush corner views that overlook the spacious greenery below and cozy solid wooden floors, the exuberant fitness studio exhibits a peaceful surrounding while pumping up a cardio workout. Equipped with state-of-the-art exercise equipment from Technogym, the world's leading fitness equipment including machines designed by Italian designer, Antonio Citterio.

FITNESS STUDIO

Boasting lush corner views that overlook the spacious greenery below and cozy solid wooden floors, the exuberant fitness studio exhibits a peaceful surrounding while pumping up a cardio workout. Equipped with state-of-the-art exercise equipment from Technogym, the world's leading fitness equipment including machines designed by Italian designer, Antonio Citterio.





Experience your future with simulated atmosphere and surroundings.

PRIVATE LIFT

Enjoy the advantages of your own private lift with the unique destination control system. Each lift may only be used by you or your family at the same time and takes you directly only to permitted levels, such as communal facility floors and your own private residence, ensuring you appreciate the highest privacy and sense of wellbeing.



3 BEDROOM PRIVATE FOYER

The beautifully laid book-matched White Venus Marble that welcomes you as the private lift door opens, provides the best greeting to your precious home. The private foyer is fitted with a special fabric glass partition that acts as a secure gateway to the main residence. Moreover, the space is even more advantageous as it can extend the living area, giving you more room to breathe.



Computer generated images. The condition is subject to change without prior notice.



Computer generated images. / The condition is subject to change without prior notice.

BALCONY SPACE

Truly live your life up in the sky from the vantage point of a sprawling outdoor space connecting directly from the living room. Floors and ceilings covered in solid wood give the natural touch to a personal oasis perfect for avid gardeners to add the beauty of a small plot to their own residence. With so much room to play with, sit back, relax and enjoy a delicious cup of tea, appreciate a family meal in the open air or even host a party for your friends in the great outdoors.

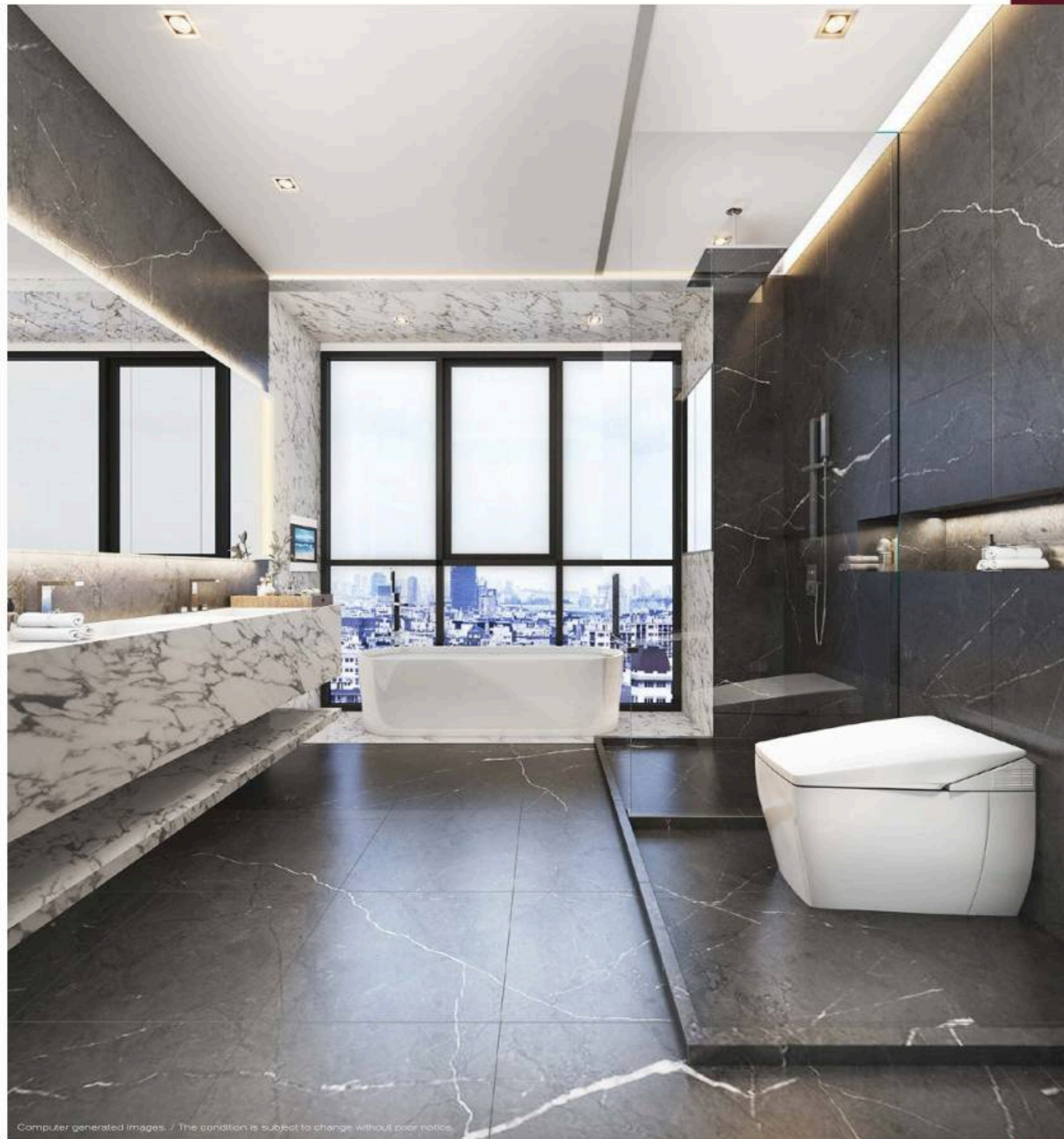


Computer generated images. / The condition is subject to change without prior notice.

LIVING ROOM

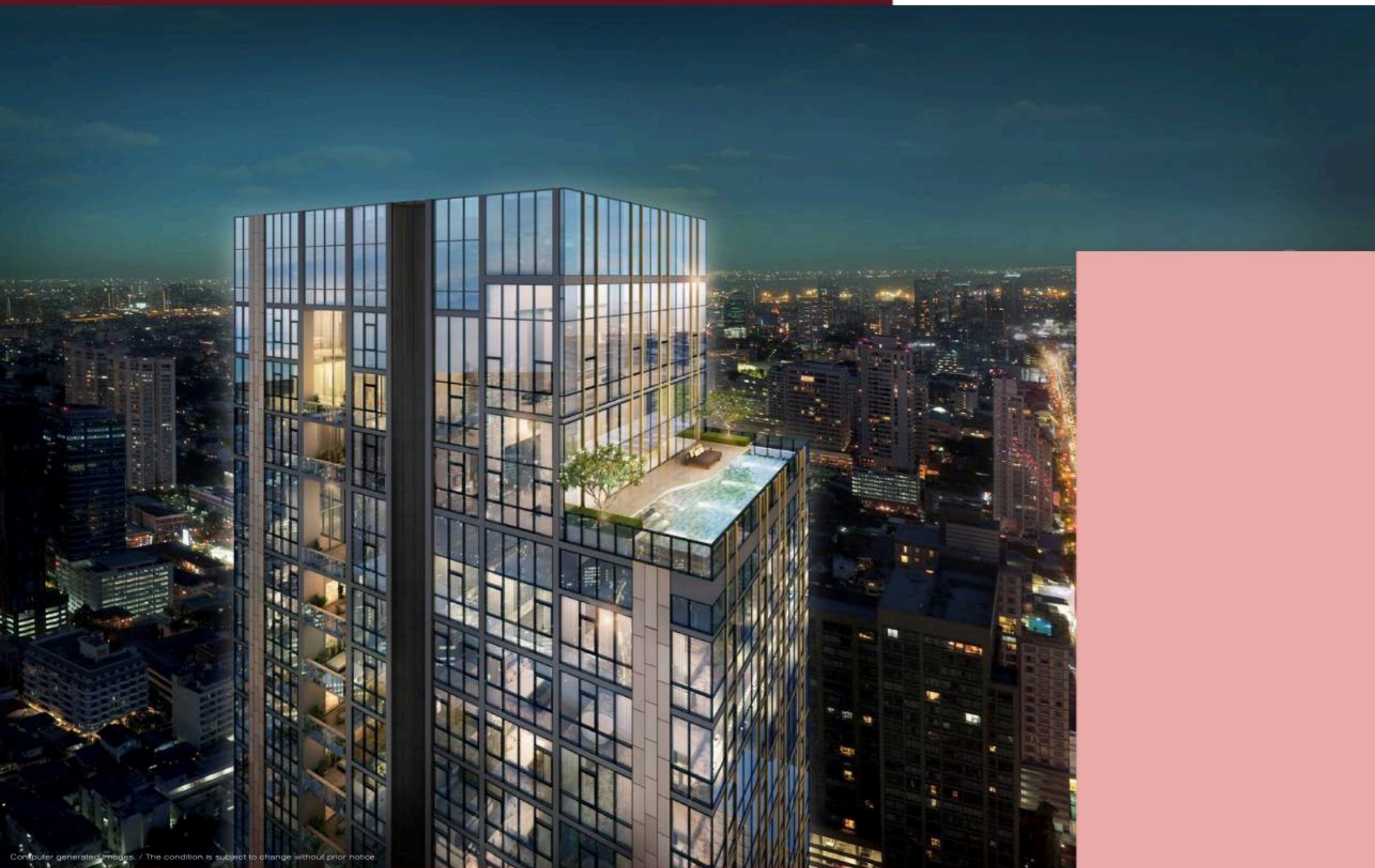
Bask in the oversized comfort of a vast space at the heart of the home, where families may gather and grow ever closer. From the everyday routine of doing some work, relaxing and watching television to more special occasions and parties, the living room affords the ultimate privacy cloaked in sound proofing and light reflecting triple-glazed low-emissivity insulating glass. Feel immersed in luxury in every way, with White Venus marble flooring throughout, complemented by the lofty ceilings that add another dimension to the expansive environment.





BATHROOM

Make the mundane routine of life truly exceptional in a bathroom designed to be sumptuous yet perfectly functional. Paved with Petra Grey marble on the floor and Arabescato marble on the walls, you are enveloped in a cocoon of sheer luxury for those private moments of contemplation, complemented by high quality sanitary wares such as those from the brand Gessi.



PENTHOUSES

Soar over the world beneath and appreciate expansive vistas across the Bangkok skyline in one of the three penthouses on offer. With sizes ranging up to 600 square metre and 5 metre high ceilings in the living rooms, these colossal and well-appointed residences are perfect for hosting exclusive parties that are sure to be the talk-of-the-town, or simply enjoy life at the top whilst relaxing with your family, having dinner with the stars and swimming in the private pool amidst the sparkling cityscape.



2 BEDROOM PRIVATE FOYER

Greeted by book-matched White Venus Marble that welcomes you as the private lift door opens, provides the best greeting to your precious home. the private foyer extends the semi-outdoor balcony. Separated by oakwood panel doors and lined in real leather, adding more luxury to every detail.



Computer generated images. The condition is subject to change without prior notice.



BATHROOM

Make the mundane routine of life truly exceptional in a bathroom designed to be sumptuous yet perfectly functional. Paved with Petra Grey marble on the floor and Arabescato marble on the walls, you are enveloped in a cocoon of sheer luxury for those private moments of contemplation, complemented by high quality sanitary wares such as those from the brand Gessi.

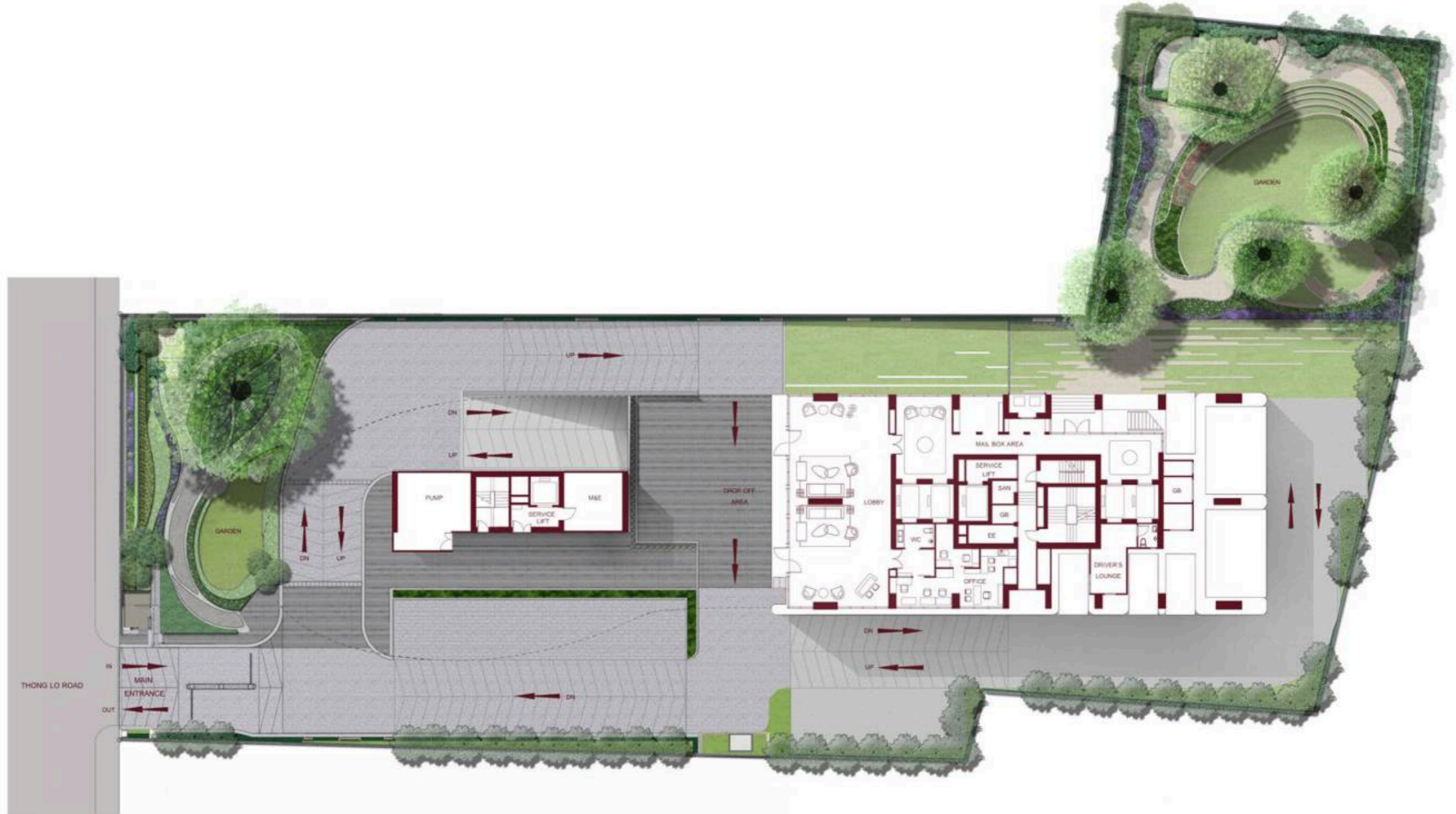


Computer generated images. / The content is subject to change without prior notice.

POWDER ROOM

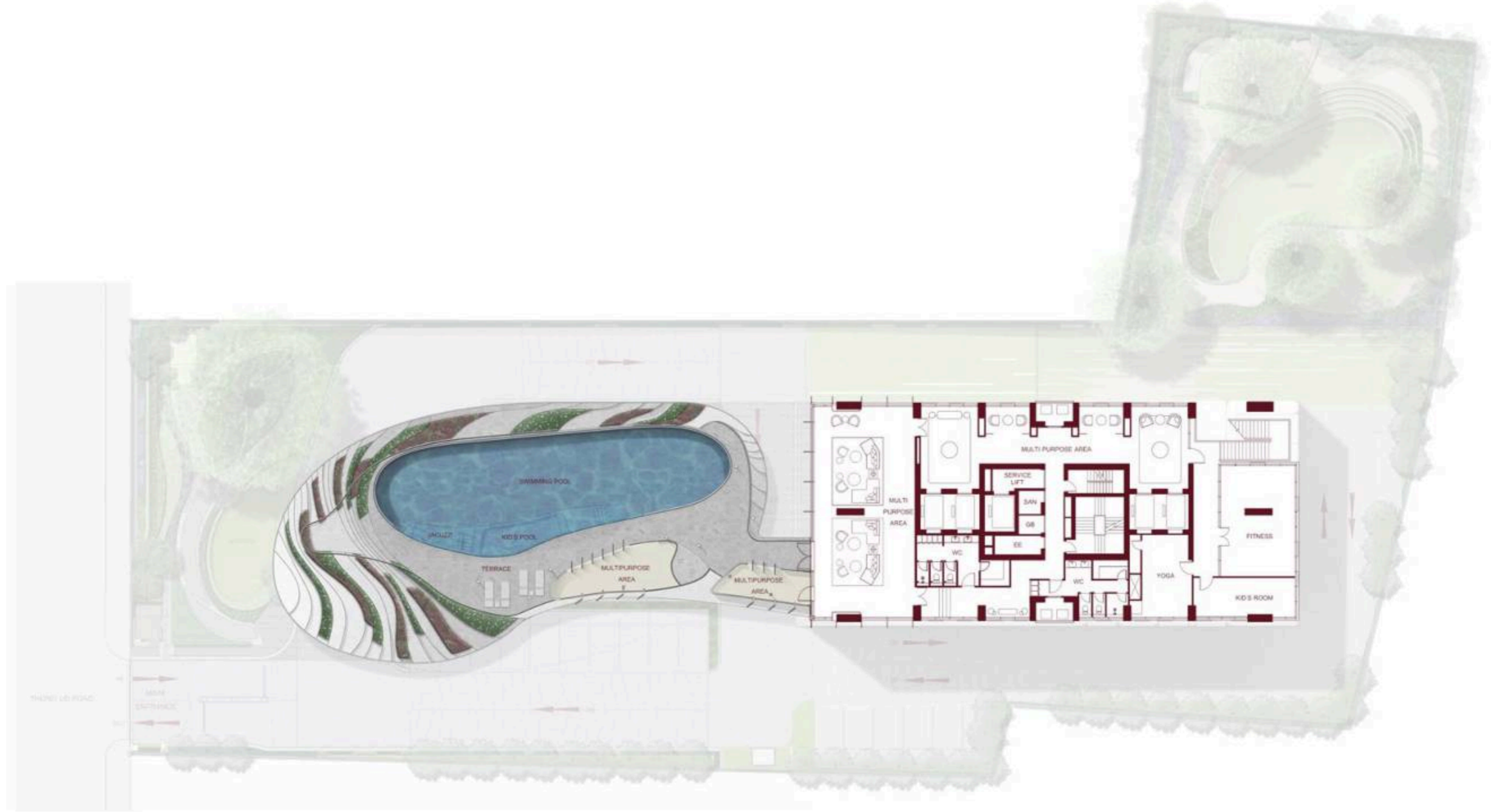
The intriguing interior of the powder room comes from the soft grey veined patterns of the White Venus Marble. Equipped with signature designed faucets from Italian brand Gessi, that is also used in luxury hospitality properties across the world.

MASTER PLAN



Remark: Layout and area of the properties which identified herein maybe changed as deemed appropriate, but will not impact upon the use

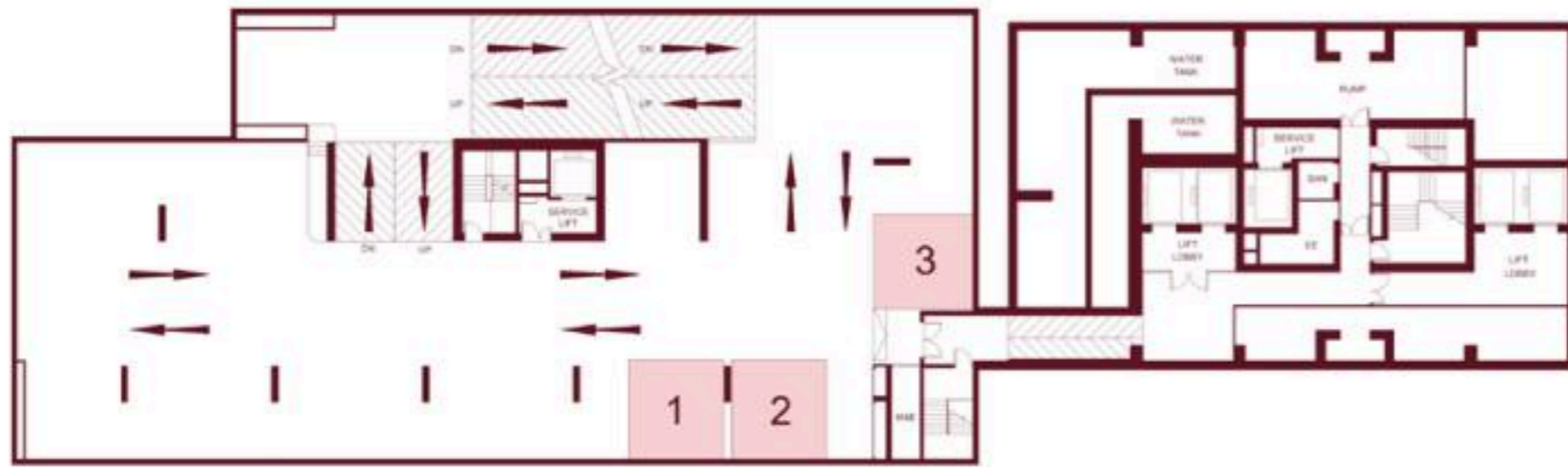
FACILITIES PLAN



Remark: Layout and area of the properties which identified herein maybe changed as deemed appropriate, but will not impact upon the use

FLOOR PLAN

B1

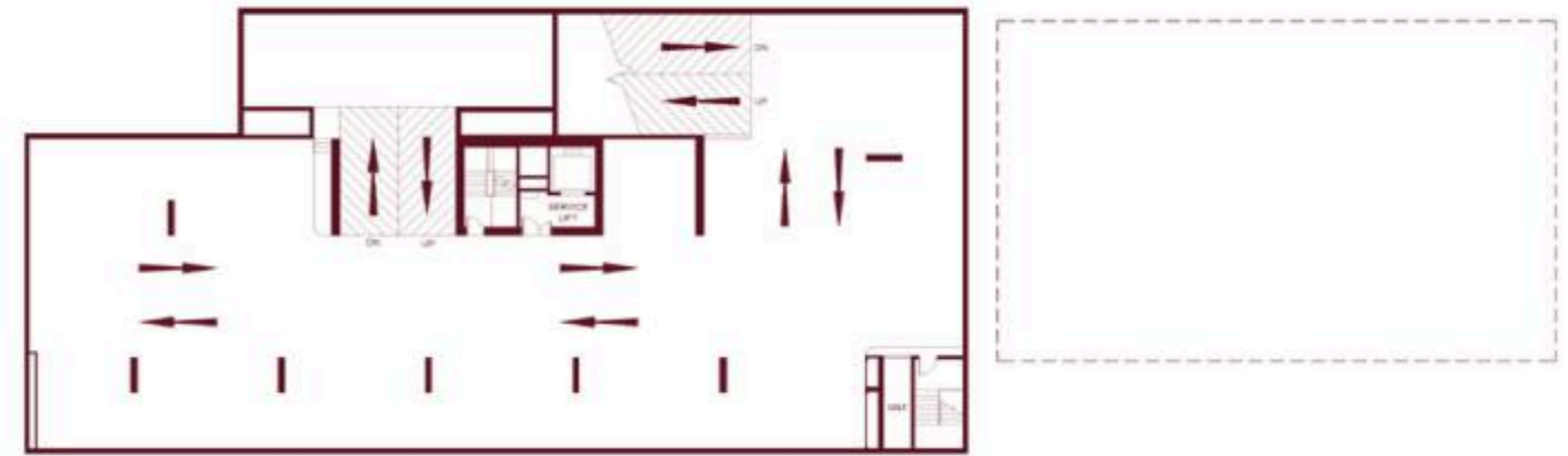


Remark

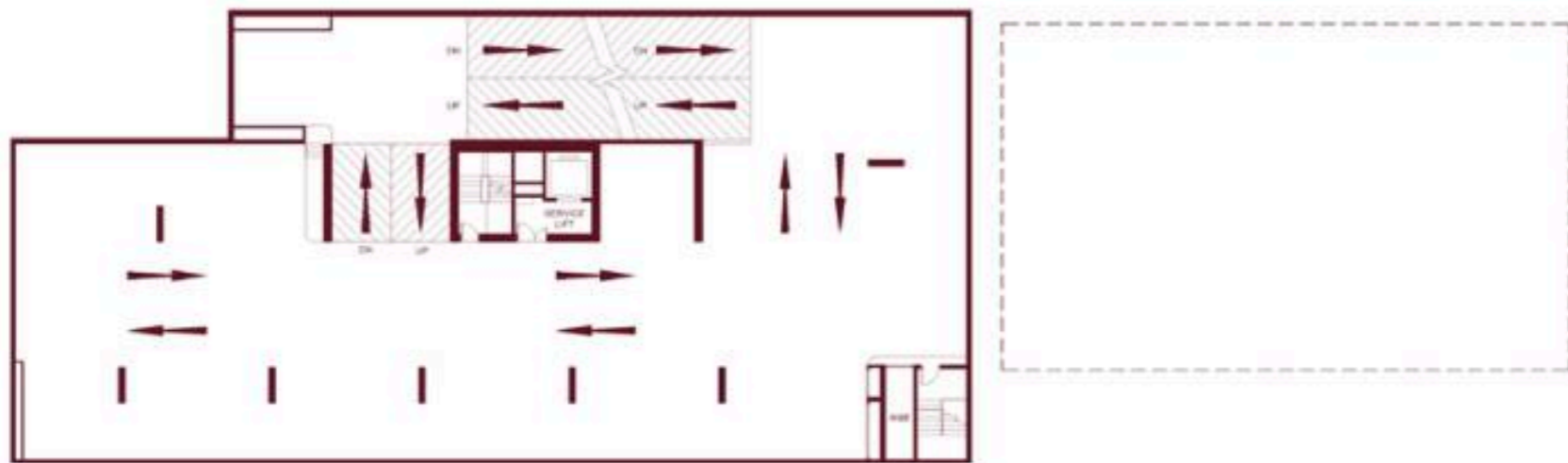
- 1. Private property 014101
- 2. Private property 014201
- 3. Private property 014301



B6



B2 - B5

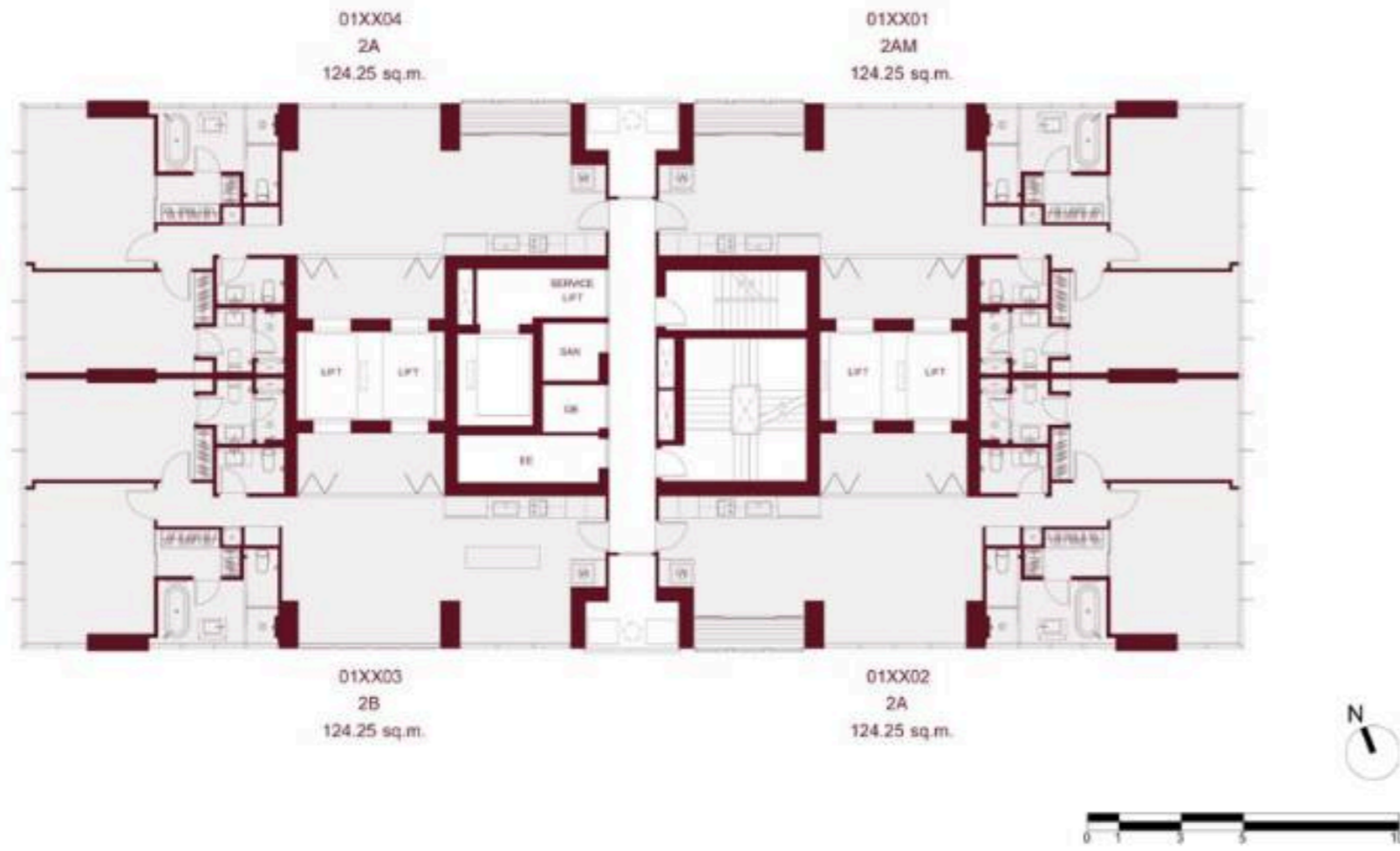


Remark: Layout and area of the properties which identified herein maybe changed as deemed appropriate, but will not impact upon the use

Remark: Layout and area of the properties which identified herein maybe changed as deemed appropriate, but will not impact upon the use

FLOOR PLAN

3rd-27th



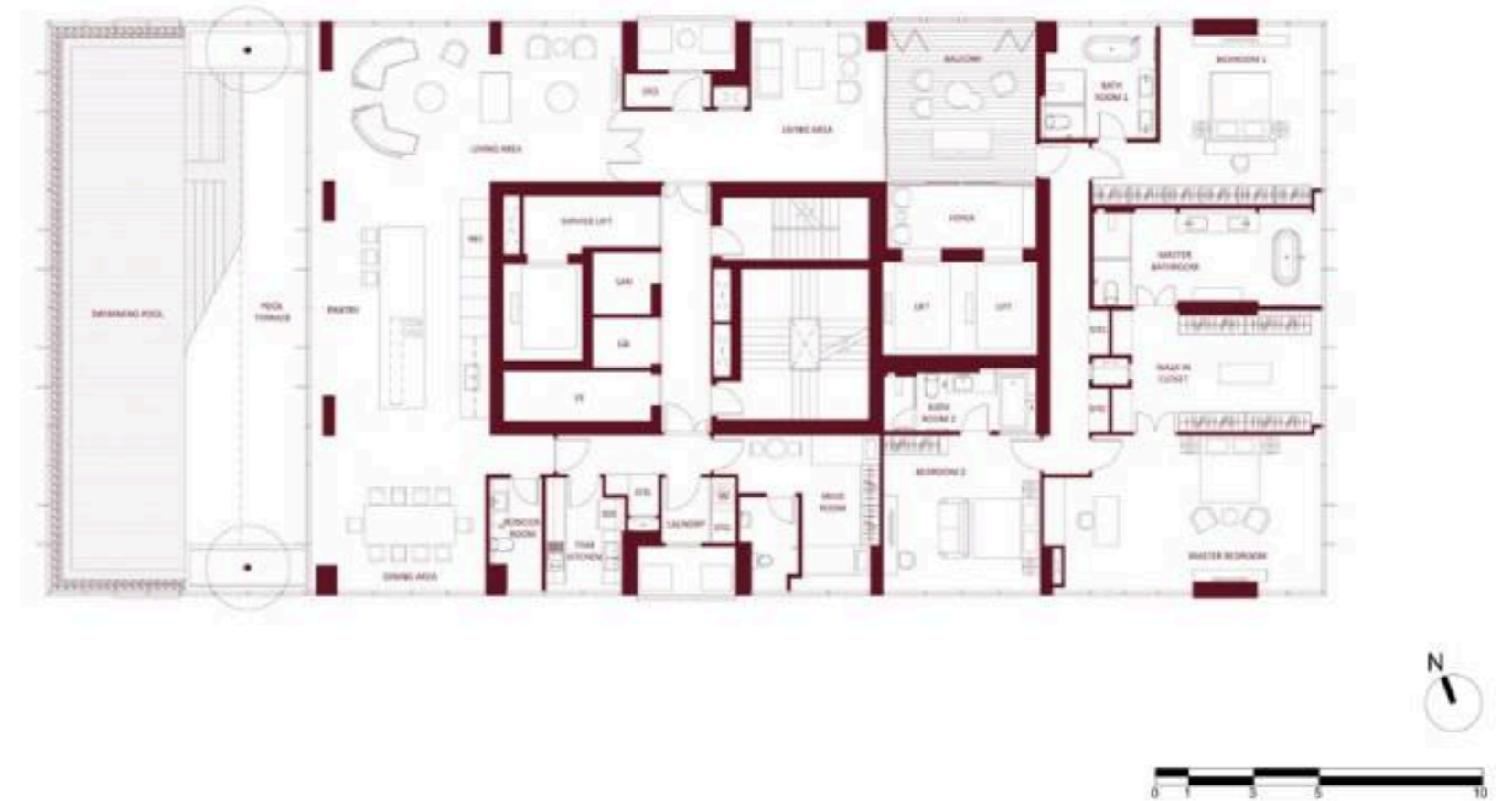
41st



29th-40th



42nd

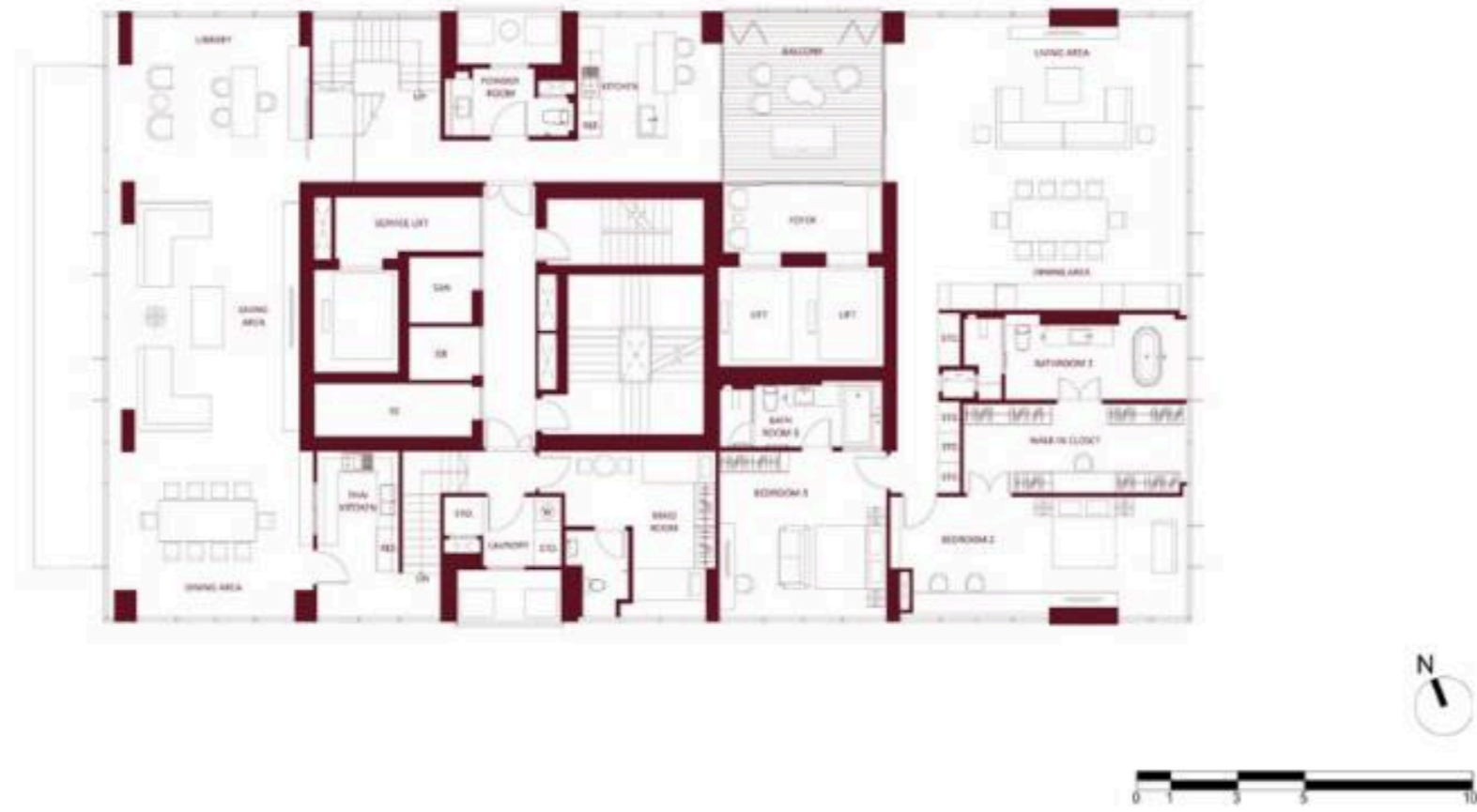


Remark: Layout and area of the properties which identified herein maybe changed as deemed appropriate, but will not impact upon the use

Remark: Layout and area of the properties which identified herein maybe changed as deemed appropriate, but will not impact upon the use

FLOOR PLAN

43rd



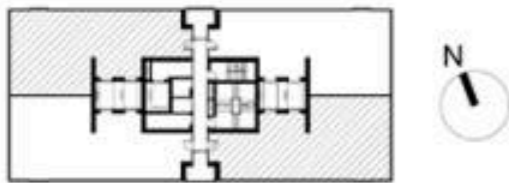
44th



Remark: Layout and area of the properties which identified herein maybe changed as deemed appropriate, but will not impact upon the use

ROOM LAYOUT

2A
124.25 sq.m.



LIFT & FOYER

Discover the ultimate in privacy with a dual system private lift with destination control system. The foyer, paved with White Venus marble, includes retractable doors that open up the living room to enlarge the space.

MASTER BEDROOM & BATHROOM

Incorporating a walk-in closet and master bathroom with free-standing bath tub, which allow for a view even whilst taking a bath.

DINING & LIVING

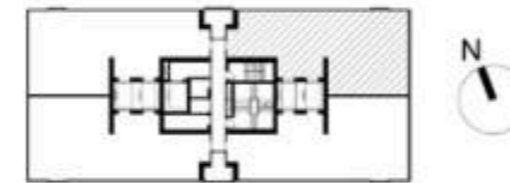
Living and dining rooms with 3 metre high ceilings with wide frontage and triple-glazed low-emissivity insulating glass, are paved with White Venus marble and laid out in an open-plan design to optimise the feeling of airiness. Full height floor to ceiling glass doors open up onto the balcony to increase the space and allow for indoor/outdoor living.

KITCHEN

Kitchen set imported from Italy by Binova, designed to be sumptuous, functional and perfectly suited for regular use, with counter tops hewn from Arabescato marble imported from Europe. The balcony here affords residents the opportunity to appreciate the fresh air and spectacular views of Thonglo at night, whilst the laminated glass railing lets through the continuous breeze.

Remark: Layout and area of the properties which identified herein maybe changed as deemed appropriate, but will not impact upon the use

2AM
124.25 sq.m.



LIFT & FOYER

Discover the ultimate in privacy with a dual system private lift with destination control system. The foyer, paved with White Venus marble, includes retractable doors that open up the living room to enlarge the space.

MASTER BEDROOM & BATHROOM

Incorporating a walk-in closet and master bathroom with free-standing bath tub, which allow for a view even whilst taking a bath.

DINING & LIVING

Living and dining rooms with 3 metre high ceilings with wide frontage and triple-glazed low-emissivity insulating glass, are paved with White Venus marble and laid out in an open-plan design to optimise the feeling of airiness. Full height floor to ceiling glass doors open up onto the balcony to increase the space and allow for indoor/outdoor living.

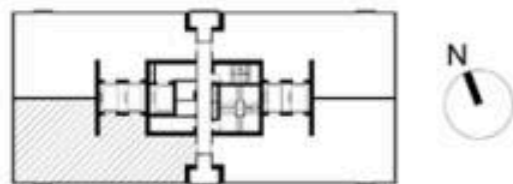
KITCHEN

Kitchen set imported from Italy by Binova, designed to be sumptuous, functional and perfectly suited for regular use, with counter tops hewn from Arabescato marble imported from Europe. The balcony here affords residents the opportunity to appreciate the fresh air and spectacular views of Thonglo at night, whilst the laminated glass railing lets through the continuous breeze.

Remark: Layout and area of the properties which identified herein maybe changed as deemed appropriate, but will not impact upon the use

ROOM LAYOUT

2B
124.25 sq.m.



LIFT & FOYER

Discover the ultimate in privacy with a dual system private lift with destination control system. The foyer, paved with White Venus marble, includes retractable doors that open up the living room to enlarge the space.

DINING & LIVING

Living and dining rooms with 3 metre high ceilings with wide frontage and triple-glazed low-emissivity insulating glass, are paved with White Venus marble and laid out in an open-plan design to optimise the feeling of airiness.

KITCHEN

Kitchen set imported from Italy by Binova, designed to be sumptuous, functional and perfectly suited for regular use, with counter tops hewn from Arabescato marble imported from Europe. A Function Island is provided for convenience in food preparation before serving.

MASTER BEDROOM & BATHROOM

Incorporating a walk-in closet and master bathroom with free-standing bath tub, which allow for a view even whilst taking a bath.

Remark: Layout and area of the properties which identified herein maybe changed as deemed appropriate, but will not impact upon the use

3A
252.25 sq.m.



LIFT & FOYER

Discover the ultimate in privacy with a dual system private lift incorporating destination control system that opens up directly into your own large foyer. Paved with book-matched White Venus marble, the foyer is entered through a wooden slat door with a unique pattern design, trimmed in genuine leather and aluminium.

TERRACE

You'll feel the luxury of living in a home with a spacious approximately 20 square metre balcony made out of solid wood, making it even more enjoyable to do a spot of gardening.

DINING & LIVING

Oversized living and dining rooms with 3.3 metre high ceilings are paved with White Venus marble, surrounded on two sides by triple-glazed low-emissivity insulating glass that would efficiently block heat, noise and UV as well as enhances air ventilation. Appreciate the utmost convenience in entertaining with the lifestyle kitchen by Binova, integrating wine cellar and coffee machine, located in the living room.

PANTRY

Kitchen set imported from Italy by Binova, designed to be sumptuous, functional and perfectly suited for regular use. Appreciate the panoramic view and the convenience of the kitchen and counter tops hewn from Arabescato marble and solid wood panel imported from Europe. The floor is paved with White Venus marble.

MASTER BEDROOM & BATHROOM

Master bedroom situated at the corner of the unit, affording residents the perfect vantage point to appreciate the panoramic view. Your daily routine will always be comfortable and convenient with a master bathroom, incorporating his and hers sinks and a free-standing bath tub, as well as a great view every time you take a bath.

SERVICE YARDS

Service yard for the Thai kitchen separated from living areas, so odours do not disturb residents, and maid's room with its own bathroom.

Remark: Layout and area of the properties which identified herein maybe changed as deemed appropriate, but will not impact upon the use

ROOM LAYOUT

3B
252.25 sq.m



LIFT & FOYER

Discover the ultimate in privacy with a dual system private lift incorporating destination control system that opens up directly into your own large foyer. Paved with book-matched White Venus marble, the foyer is entered through a wooden slat door with a unique pattern design, trimmed in genuine leather and aluminium.

TERRACE

You'll feel the luxury of living in a home with a spacious approximately 20 square metre balcony made out of solid wood, making it even more enjoyable to do a spot of gardening.

DINING & LIVING

Oversized living and dining rooms with 3.3 metre high ceilings are paved with White Venus marble, surrounded on two sides by triple-glazed low-emissivity insulating glass that would efficiently block heat, noise and UV as well as enhances air ventilation. Appreciate the utmost convenience in entertaining with the lifestyle kitchen by Binova, integrating wine cellar and coffee machine, located in the living room.

PANTRY

Kitchen set imported from Italy by Binova, designed to be sumptuous, functional and perfectly suited for regular use. Appreciate the panoramic view and the convenience of the kitchen and counter tops hewn from Arabesscato marble and solid wood panel imported from Europe. The floor is paved with White Venus marble.

MASTER BEDROOM & BATHROOM

Master bedroom situated at the corner of the unit, affording residents the perfect vantage point to appreciate the panoramic view. Your daily routine will always be comfortable and convenient with a master bathroom, incorporating his and hers sinks and a free-standing bath tub, as well as a great view every time you take a bath.

SERVICE YARDS

Service yard for the Thai kitchen separated from living areas, so odours do not disturb residents, and maid's room with its own bathroom

Remark: Layout and area of the properties which identified herein maybe changed as deemed appropriate, but will not impact upon the use

PH1
508.75 sq.m



SPECIALITY

The unit provides the ability to allow separate entrances via the lift, which can open on both sides, so more than one family can co-habit the residence whilst retaining a sense of privacy. The bedrooms and living spaces can therefore be divided into separate living quarters that come together in the large living room seamlessly.

LIFT & FOYER

Discover the ultimate in privacy with a 2 exit dual system private lift incorporating destination control system that opens up directly into your own large foyer. Paved with book-matched Sequoia Brown marble, the foyer is entered through a wooden slat door with a unique pattern design, trimmed in genuine leather and aluminium.

DINING & LIVING

Oversized living and dining rooms with 5.3-metre high ceiling paved with White Rhino marble, surrounded on two sides by triple-glazed low-emissivity insulating glass providing a panoramic view. The living room is divided into 2 rooms so residents, especially multi-generational families, can feel a sense of privacy. A working area is also provided, as well as approximately 20 square metre balcony crafted in solid wood for the ultimate in outdoor living. The

lifestyle kitchen incorporates a steam oven, plate warmer, microwave, coffee machine by Wolf, wine cellar and built-in Sub Zero refrigerator.

KITCHEN

Kitchen set imported from Italy by Binova, designed to be sumptuous, functional and perfectly suited for regular use, with counter tops hewn from Pietra Grey marble and solid wood panels from which you can appreciate the panoramic view.

MASTER BEDROOM & BATHROOM

Large master bedroom situated at the corner, as well as walk-in closet separated into his & hers sections with an island at the centre. Master bathroom with his & hers sinks, paved with Sequoia Brown and White Venus marble, with special high-end free-standing bathtub by Agape.

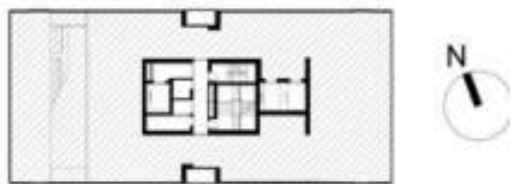
SERVICE YARDS

Service yard for the Thai kitchen separated from living areas, incorporating maid's room with private bathroom and space for two beds.

Remark: Layout and area of the properties which identified herein maybe changed as deemed appropriate, but will not impact upon the use

ROOM LAYOUT

PH2
520.75 sq.m



SPECIALITY

Private swimming pool measuring 16.5 x 3.5 metres paved with White Cloud stone that connects to the dining and living space.

LIFT & FOYER

Discover the ultimate in privacy with a dual system private lift incorporating destination control system that opens up directly into your own large foyer. Paved with book-matched Statuario marble, the foyer is entered through a wooden slat door with a unique pattern design, trimmed in genuine leather and aluminium.

DINING & LIVING

Oversized living and dining rooms with 5.3 metre high ceilings and stunning city view, are paved with Statuario marble and surrounded on two sides by triple-glazed low-emissivity insulating glass providing a panoramic view.

KITCHEN

Kitchen set imported from Italy by Binova, with counter tops hewn from Statuario marble, and automatic table ventilation installed for the ultimate comfort and convenience. Located adjacent to the swimming pool, pool parties can now be even more fun.

MASTER BEDROOM & BATHROOM

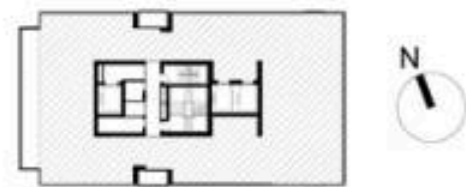
Large master bedroom situated at the corner, incorporating walk-in closet separated into his and hers sections with an island at the centre. Master bathroom with his & hers sinks, paved with Statuario marble and Pietra grey marble, with a free-standing bath tub from Agape.

SERVICE YARDS

Service yard for the Thai kitchen separated from living areas, incorporating maid's room with private bathroom and space for two beds.

ROOM LAYOUT

PH3: Lower
662.00 sq.m



SPECIALITY

Double volume ceilings reach up to 5.5 metres in height to optimise the feeling of airiness. Enjoy the ultimate living on the 2nd Floor with a personal fitness room, family room and the utmost privacy in the bedrooms, which can be adapted into separate living quarters for another family.

LIFT & FOYER

Discover the ultimate in privacy with a dual system private lift incorporating destination control system that opens up directly into your own large foyer. Paved with book-matched Calacatta marble, the foyer is entered through a wooden slat door with a unique pattern design, trimmed in genuine leather and aluminium.

DINING & LIVING

Multi-room living and dining rooms are paved with Calacatta marble and engineered wood set in a herringbone pattern, and surrounded on three sides by triple-glazed low-emissivity insulating glass providing a panoramic view. The living space can be divided into public and private sections, with an additional living room 2 and dining room 2, for the utmost comfort and convenience, whilst the Lifestyle Kitchen incorporates a coffee machine by Wolf, wine cellar and built-in Sub Zero refrigerator. The

Private yard, spanning approximately 20 square metres, is crafted in solid wood for the ultimate in outdoor living.

KITCHEN

Kitchen set imported from Italy by Binova, designed to be sumptuous, functional and perfectly suited for regular use, with counter tops hewn marble and solid wood panel.

MASTER BEDROOM & BATHROOM

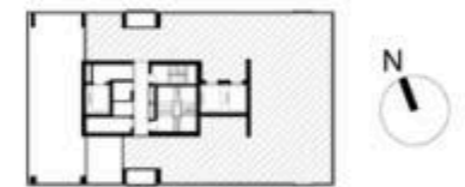
A large master bedroom situated at the corner, incorporating a gigantic dressing room measuring approximately 30 square metre in size. Master bathroom paved with Calacatta marble incorporating his & hers sinks, large jacuzzi, free-standing bath tub by Agape UFO serie and oversized rain shower by Philippe Starck.

SERVICE YARDS

Service yard for the Thai kitchen separated from living areas, incorporating maid's room with private bathroom and space for two beds.

Remark: Layout and area of the properties which identified herein maybe changed as deemed appropriate, but will not impact upon the use

PH3: Upper
662.00 sq.m



Remark: Layout and area of the properties which identified herein maybe changed as deemed appropriate, but will not impact upon the use

JOINT VENTURE

SANSIRI AND BTS JOIN HANDS IN OFFERING PROMISING LOCATIONS
TO BRING YOU CLOSER TO A JOYFUL LIFE
BY CONNECTING YOU WITH COMFORT AND CONVENIENCE.



SANSIRI FAMILY

At Sansiri, we believe the word home represents much more than one's address. Home is a sanctuary where individuals and families can enjoy their time in a positive environment, surrounded by the comforts and conveniences that allow for a genuinely happy life. We are dedicated to providing residential properties and services that best respond to our customers' deeper needs. This is our promise to those who have put their trust in us and become an important part of our Sansiri Family.

SERVICE

- **HOME CARE** Take care of every aspect of your home and enjoy the peace of mind afforded by our 24-hour online emergency notification service.
- **INSTALMENT SERVICE** You can easily check your instalment payment status or print out a payment card through Sansiri's new Online Payment Card system.
- **SANSIRI HOME SERVICE APPLICATION** A must have mobile application that serves as your very own personal assistant to facilitate today's urban living. Conveniently follow news and get real-time notifications from juristic person plus other features such as repairing report and status. Available for download at App Store and Play Store.
- **CONDO CONSTRUCTION PROGRESS** Receive regular project progress updates via our e-newsletter each month. You can check the progress of our other projects at www.sansiri.com/condoprogress.

PRIVILEGE

- **EXCLUSIVITY** Add colour to those precious family moments with a host of special privileges and fun-filled activities, available exclusively to Sansiri Family members.
- **SCB SANSIRI PLATINUM CARD** The only card you need for your home and lifestyle. Enjoy the simplicity of a credit card that answers the diverse needs of homeowners, and live life to the fullest with the added advantage of Platinum Privileges.

PROPERTY MANAGEMENT

- **PLUS PROPERTY.** Accommodating all of your real-estate needs, our experienced team at Plus Property is ready to provide 360-degree services (Resale, Leasing and Property management) to expand your investment opportunities.

Share your experiences and stay updated with the latest happenings through the following communication channels. Tel +66(0)2 201 3999

 sansiri.com/family

 facebook.com/sansirifamily

 twitter.com/sansirplc

 [sansiri home service application](#)

 pinterest.com/sansiri

 sansiri.com/blog

 [@sansirplc](https://www.instagram.com/sansirplc)

 [sansirplc](https://www.youtube.com/sansirplc)

 [sansirplc](https://www.whatsapp.com/sansirplc)

Call 1685
sansiri.com

Thong Lo

THE
MONUMENT
THONG LO

Project Owner : BTS Sansiri Holding Four Limited Company's registered no. 0105558097433. Head office : 475, 8th floor Siripinyo Building, Sri Ayudthaya Road, Thanon Phayathai Sub-District, Rajthawi District, Bangkok, 10400. Registered capital(THB) : 100,000,000. Paid up capital(THB) : 100,000,000 (as of date 18 May 2016). The President : Mr. Uthai Uthaisangskul. The Project : The Monument Thong Lo. Land title deed no. 2850-2858, 227443, approximately area 2 Rai. Located at Klongton Nue Klongton (No.11 North Phra Khanong) Sub-district, Wattana Phra Khanong District, Bangkok, as a Condominium of 45 storey(ies), 1 building(s), total of 127 unit(s), (for residential: 127 units, and for commercial: - units). The Land and building have been mortgaged with Krungthai Bank PLC., in the process to submit the building permission. Construction will be started in May 2016 and expected to be completed in Dec 2019 which will later be registered as the condominium. The unit owner shall pay sinking fund, common fee, tax and other fees as prescribed by the Project Owner or the Condominium Juristic Person subjected to the Condominium law. *Terms and conditions apply. / Featured images consist of photography on location, photography on location with simulated atmosphere and surroundings, and computer generated images. For any questions regarding the images, please contact our customer service staff or visit the project site. Tel +66(0)2 201 3999.